
Dedicated to Service and Solutions

WWW.CHEWEB.NET

PRODUCT CATALOG 2024

SUPPORT SURFACES / CHAIRS / BED FRAMES / OTHER DEVICES



CONTINENTAL HEALTH EQUIPMENT, INC.





TABLE OF CONTENTS

INDEX

Equipment Legend	PAGE 3
Support Surface Therapy Coding / Sale or Rent Only	PAGE 3

INSTANT ACCESS USER MANUALS

QR Code bar code stickers on all our equipment	PAGE 4
--	--------

BED FRAMES

Accora Floor Bed/Floor Bed Plus	PAGE 5
AllCare™ Floor Level Low Bed	PAGE 5
Comfort Wide EX 8000 Bed	PAGE 5
PrimeCare PCB903	PAGE 6
PrimeCare PCB901 and PCB902 Hi/Low	PAGE 6
PrimeCare PCB301 and PCB601	PAGE 6
UltraCare® 770, 790 and XT	PAGE 7
Slide-W-I-D-ETM 7100 / 9100	PAGE 7
Queen's Pride 600LM-Convertible Low Bed 800	PAGE 8
King's Pride 1000	PAGE 8
Maxi Rest 42/SR	PAGE 8
PrimePlus 1750/1752	PAGE 9
PrimePlus 2000/2002 & Primus 1000	PAGE 9
Tri-Flex II	PAGE 9
PrimePlus P750	PAGE 10

THERAPY SUPPORT SURFACES

Airodyne™	PAGE 11
ReactiveAir® Pro	PAGE 11
Enhance DX	PAGE 11
Apollo 3-port	PAGE 12
Sentech 1200	PAGE 12
Sentry 1250	PAGE 12
Salute RDX	PAGE 13
80" Adapt Pro Elite™	PAGE 13
84" Adapt Pro Elite™	PAGE 13
Power-Turn Elite®	PAGE 14
Sentry 1400	PAGE 14
Medacure Air Stream	PAGE 14
Stage IV® 2000 and 2000 Plus	PAGE 15
Power-Pro™ Elite Convertible	PAGE 15
MicroAIR® 65P	PAGE 15
K-2 Kare-Zone™	PAGE 16
Stage IV® 3000 and 3000 Plus	PAGE 16
Thera-Turn Millennium / Plus	PAGE 16

SPECIALTY CHAIRS/WHEELCHAIRS

Dyn-Ergo Scoot Chair	PAGE 17
----------------------	---------

SPECIALTY CHAIRS/WHEELCHAIRS (Cont'd)

Evolution Mobility Chair	PAGE 17
Posturo-Pedic 1000	PAGE 17
Comp-Position Positioning Chair	PAGE 18
FlexTilt WC19 Transport Chair	PAGE 18
The EZ Transport Chair	PAGE 18
Rock-King X3000	PAGE 19
RNG 2000	PAGE 19
Convertible I-Series (I-400, I-700)	PAGE 19
Revive Shower Commode	PAGE 20
Varying Standard Wheelchair Width Options	PAGE 20
Varying High-Back Reclining Wheelchair Width Options	PAGE 20

NEGATIVE PRESSURE WOUND THERAPY

UNO	PAGE 21
Genadyne XLR8	PAGE 21

PATIENT LIFTS

Reliant 450 Battery-Powered Lift	PAGE 22
Reliant 600 Heavy-Duty Power Lift	PAGE 22
PrimePlus® 600 Lift	PAGE 22
Drive 600 Lift	PAGE 23
Hoyer® HPL600	PAGE 23
Hoyer® HPL700	PAGE 23
Maxi Care Bariatric Lift	PAGE 24
Titan-X® Mobile Lift	PAGE 24
Hoyer® Pro 300 Stand Aid	PAGE 24
Sit To Stand Assist Lift	PAGE 25
Detecto IB 800 In-Bed Scale	PAGE 25

MISCELLANEOUS ITEMS

Sedens 500	PAGE 26
Mobile Air Chair	PAGE 26
Chair-Air™ Model 9700CAF	PAGE 26
Optiflex® 3 Knee CPM	PAGE 27
OptiFlex®-K1	PAGE 27
Dc2480 Knee CPM	PAGE 27
Phoenix Model 1850 Knee CPM	PAGE 28
PulSTAR® Logix® DVT	PAGE 28
SR193 Under-Bed Weighing System	PAGE 28
Thera-Glide® Safety Glider	PAGE 29
Powered Recliner w/ Stand & Lift Assist	PAGE 29

ADVISOR

CHE Support Surface Advisor	PAGE 30
-----------------------------	---------

EQUIPMENT LEGEND



This piece of equipment can be ordered to fit bariatric patients. See each equipment description for detailed product dimensions for detailed product dimensions and weight capacities.



This support surface comes with side air bolsters.



This support surface comes with side bolsters made of foam.



This product contains Visco Elastic foam, commonly referred to as "Swedish Foam" or "Memory Foam".



This product has built in Hi-Lo functionality. These devices can help with fall prevention, restraint reduction and no lift procedures.



This piece of durable medical equipment can help you fulfill your facilities "Fall Prevention" program.



This piece of durable medical equipment can help you fulfill your facilities "Restraint Reduction" program.



This piece of durable medical equipment can help you fulfill your facilities "No Lift" program.

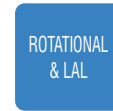


This product can help you heal wounds and can be used in wound care formularies and protocols.

SUPPORT SURFACE THERAPY CODING



Continental Health Equipment does not currently carry any Air Fluidized Systems. Common names for these systems include "Bead Bed" or "Clinitron".



Rotational and Low Air Loss Combination systems provide both rotational therapy as well as low air loss therapy simultaneously.



Low Air Loss and Alternating Pressure Combination systems provide both alternating pressure therapy as well as low air loss therapy simultaneously.



Rotational systems provide lateral rotation therapy to the resident.



Low Air Loss Combination systems provide low air loss therapy.



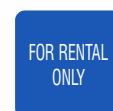
Alternating Pressure systems provide alternating pressure therapy to the resident. Continental Health Equipment carries both full replacement mattress systems and seating surfaces that use alternating pressure therapy.



The resident is a candidate for wound prevention. Consider using the appropriate combination of seating and sleeping surfaces that will limit the risk of pressure ulcer development. The seating and sleeping surfaces that will help prevent pressure ulcers maybe any combination of gel, foam, or air system.



It does not seem as though the resident is at risk for the development of pressure ulcers. Continue to monitor the resident in accordance with your facilities standard procedures and protocols.



EVER NEED INSTANT ACCESS TO A MANUFACTURER'S USER MANUAL FOR MEDICAL EQUIPMENT?



Continental Health Equipment places QR Code bar code stickers on all our equipment, so you can instantaneously access the Equipment User Manual. Simply scan the QR Code with your smart phone camera and a copy of the manual will appear in your web browser.

Accora Floor Bed/Floor Bed Plus



The Accora Floor Bed was developed to provide comfort and ease of operation to patients and caregivers. The Floor Bed frames have the ability to lower to 2.8" off the floor, providing more fall safety for residents. The frame also has the ability to extend from 80" to 84" in length, providing the adjustability needed for healthcare providers.



SPECIFICATIONS:

Weight Capacity:	330 lbs.
Deck Height (low position):	2.8"
Deck Height (high position):	25.6"
Sleep Surface:	36" x 80-84"
Floor Bed Plus	
Weight Capacity:	496 lbs.
Deck Height (low position):	3.1"
Deck Height (high position):	25.6"
Sleep Surface:	42" x 80-84"

AllCare™ Floor Level Low Bed



The Med Mizer Allcare Bed frames have the ability to lower to 3.6" off the floor, providing more fall safety for residents. The Med Mizer Allcare Bed is highly adjustable, accommodating users of all body types. The frame can extend from 80" to 84" in length, providing the length adjustment needed for taller users. The frame can extend from 35", to 39", to 42" in width, providing the width adjustment needed for wider users. Includes: Four Function Hand Remote.



SPECIFICATIONS:

Weight Capacity:	600 lbs.
Deck Height (low position):	3.6"
Deck Height (high position):	25"
Sleep Surface:	Convertible from 35" to 39" to 42" W by 80" or 84" L
Assist Rails:	Optional

Comfort Wide EX 8000 Bed



The EX 8000 Bed was developed to provide comfort and ease of operation to patients and caregivers. Frames have the deck range of 9.5" to 25.5" off the ground. Bed is highly adjustable, accommodating users of all body types. The frame can extend from 35.5", to 38.5", to 41.5" to 47.5" in width, providing the width adjustment needed for wider users.



SPECIFICATIONS:

Weight Capacity:	800 lbs.
Deck Height (low position):	9.5"
Deck Height (high position):	25.5"
Sleep Surface:	Convertible from 35.5" to 38.5" to 41.5" to 47.5" W by 80" L

PrimeCare PCB903



A Five Function Hand Remote is able to adjust; head section height, bed frame height, foot section height, simultaneous head and foot height, and the under bed light. Trendelenburg is available through the Staff Control feature on the footboard. Assist Rails are optional.



SPECIFICATIONS:

Max. Weight Capacity:	600 lbs.
Bed Width:	36"
Bed Width w/Extension:	42"
Bed Deck Length:	80", 84", 88"
Lifting Range:	7" - 30"
Profiling Functions:	Trendelenburg/Reverse Trendelenburg
Caster Lock:	Yes
Wall Guard:	Yes
Heel Lift Ratchet:	Yes

PrimeCare PCB901 and PCB902 Hi/Low



The bed frame lowers to 7" off the floor and raises to 30" off the ground. A Four Function Hand Remote is included with the bed. Assist Rails are optional.



SPECIFICATIONS:

Weight Capacity:	500 lbs.
Bed Width:	36"
Bed Width w/Extension:	42"
Bed Deck Length:	76", 80", 84"
Lifting Range:	7-30"
Profiling Functions:	Trendelenburg Reverse TrendelenburgMax.
Caster Lock:	Yes
Wall Guard:	Yes
Heel Lift Ratchet:	Yes

PrimeCare PCB301 and PCB601



The bed frames have the ability to lower to 8" off the floor, providing more fall safety for residents and raise to 26" for caregiver comfort and safety. A Four Function Hand Remote is included with the bed. Assist rails are optional.



SPECIFICATIONS:

Max. Weight Capacity	450 lbs.
Bed Width	301/36", 601/36.75"
Bed Width w/Extension	42"
Bed Length	86.5"
Lifting Range	8-26"
Caster Lock	Yes
Floor Lock	301/No, 601/Yes

UltraCare® 770, 790 and XT



The Joerns Ultra Care Beds come in three different models. Each model was developed to provide comfort and ease of operation to patients and caregivers.

The bed frames have the ability to lower to either 7" or 9" off the floor, providing more fall safety for residents and raise to 30" for caregiver comfort and safety. A Hand Control and Staff Control are included with the bed. Assist rails and a length extension kit are optional



SPECIFICATIONS:

Weight Limit Capacity:	500 lbs.
770 Dimensions:	80"L x 35"W x 7"H
790 Dimensions:	80"L x 35"W x 9"H
XT Dimensions:	82"L x 35"W x 7"H
Weight:	770: 220 lbs., 790: 250 lbs., XT (base): 220 lbs.
Weight of XT (equipped with dual ultra-locks):	274 lbs.
Minimum height for the 770/XT:	7"
Minimum height for the 790:	9"
Maximum height for mattress support surface:	30"

Slide-W-I-D-E™ 7100 / 9100



The frame provides width adjustability as a standard feature, ranging from 35" wide to 39" wide to 42" wide. The bed frame also has the ability to lower to 8" off the floor, providing more fall safety for users.

Includes: Five Function Hand Remote and Adjustable Width Pans.



SPECIFICATIONS:

7100 Weight Capacity:	500 lbs.
9100 Weight Capacity:	600 lbs.
Convertible Size:	35-39-42" x 82"
Fully Expanded Bariatric Size:	42" x 82"
7100 Bed Height from Floor:	7.95" - 30"
9100 Bed Height from Floor:	7" - 30"
Assist Rails:	Optional

Queen's Pride 600LM-Convertible



The frame provides width adjustability as a standard feature, ranging from 39" wide to 42" wide to 48" wide. Includes: Three Function Hand Remote and Adjustable Width Pans.



SPECIFICATIONS:

Weight Capacity:	750 lbs.
Convertible Size:	39" x 80"
Fully Expanded Bariatric Size:	48" x 80"
Bed Height from Floor:	15" to 28"
Assist Rails:	Optional
Assist Bars:	Optional
Trapeze:	Optional

Low Bed 800



The frame provides width adjustability as a standard feature, ranging from 39" wide to 42" wide to 48" wide. The bed frame also has the ability to lower to 8" off the floor, providing more fall safety for residents that would use the bed. Includes: Four Function Hand Remote and Adjustable Width Pans.



SPECIFICATIONS:

Weight Capacity:	1000 lbs.
Convertible Size:	39" x 80"
Fully Expanded Bariatric Size:	48" x 80"
Bed Height from Floor:	11.25" to 25"
Assist Rails:	Optional
Assist Bars:	Optional
Trapeze:	Optional

King's Pride 1000



The frame provides width adjustability as a standard feature, ranging from 39" wide to 42" wide to 48" wide. Includes: Four Function Hand Remote and Adjustable Width Pans.



SPECIFICATIONS:

Weight Capacity:	1000 lbs.
Convertible Size:	39" x 80"
Fully Expanded Bariatric Size:	48" x 80"
Bed Height from Floor:	15" to 28"
Assist Rails:	Optional
Assist Bars:	Optional
Trapeze:	Optional

Maxi Rest 42/SR



The frame provides width adjustability as a standard feature, ranging from 39" wide to 42" wide to 48" wide. Includes: Four Function Hand Remote.



SPECIFICATIONS:

Weight Capacity:	800 lbs.
Convertible Size:	39" x 80"
Fully Expanded Bariatric Size:	48" x 88"
Bed Height from Floor:	15" to 29"
Assist Rails:	Optional
Patient Scale:	Optional

PrimePlus 1750/1752

The bed is capable of expanding to accept a 48" wide mattress, making it an excellent high capacity choice. Tool-free push button expansion pans allow the user to expand the bed quickly. Heavy duty locking casters reside on all four corners of the bed. Thick padded side rails lock into multiple positions quickly.



SPECIFICATIONS:	
Maximum Weight Capacity:	750 lbs.
Overall Length with Head and Footboard:	92"
Overall Width:	40.5"
Overall Width with Extension to Pins:	39", 42", 48"
Length of Mattress Deck:	80 - 84"
Pendant Connections on Both Sides of Bed:	Yes
Weight of Bed:	423 lbs.

PrimePlus 2000/2002 & Primus 1000

The bed is capable of expanding to accept up to a 54" wide mattress, making it an excellent high capacity choice. Tool-free push button expansion pans allow the user to expand the bed quickly. Heavy duty locking casters reside on all four corners of the bed. Thick padded side rails lock into multiple positions quickly.



SPECIFICATIONS:	
Maximum Weight Capacity:	1000 lbs.
Overall Length with Head and Footboard:	92"
Overall Width:	40.5 lbs.
Overall Width with Extension to Pins:	39, 42, 48, 54"
Length of Mattress Deck:	80 - 88"
Mattress Deck Height - in Lowest Position:	19"
Mattress Deck Height - in Highest Position:	32"
Pendant Connections on Both Sides of Bed:	Yes
Patient Scale:	Yes

Tri-Flex II

The multi-purpose bed can be adjusted to facilitate many facets of patient care, including: The frame may be raised or lowered to accommodate user safety. The frame can adjust into a Trendelenberg and a Reverse Trendelenberg position. The pendant has a function to adjust the bed frame into a Cardio Chair. Includes: Five Function Hand Remote. Note: For hospital use only.



BURKE BARIATRIC

SPECIFICATIONS:	
Weight Capacity:	1000 lbs.
Length (end-to-end):	94"
Width:	40.75"
Weight:	575"
Patient Surface Length:	86"
Patient Surface Width:	48"
Bed Transport Width:	37"
Deck High:	28"
Deck Low:	14"

PrimePlus P750

The bed is capable of expanding to accept a 48" wide Mattress, also expands in length to 88". Tool-free push button expansion pans allow the user to expand quickly. Four heavy duty locking casters, roll easy at any height and lock secure.



drive
for the road ahead

SPECIFICATIONS:

Maximum Weight Capacity:	750 lbs.
Built-in-Width Expansion:	39", 42", 48"
One step Locking:	Yes
Sleep Surface:	80" - 84" - 88"
Warranty:	15 year on Frame. Year on Electrical and Mechanical.
	Lifetime on all welds.

Airodyne™



The Airodyne has a unique pressure monitoring system called I.P.S. Technology (Intelligent Pressure Sensing). I.P.S. technology enables the Airodyne power unit to monitor the internal pressure of the mattress every six seconds to provide optimal comfort levels and therapy to the users according to their weight.



SPECIFICATIONS:

Mattress Dimensions:	80" x 37" x 7"
Overlay Dimensions:	80" x 35" x 5"
Power Unit Dimensions:	10" x 8.75" x 3.5"

ReactiveAir® Pro



The ReactiveAir Pro is a convertible powered/non-powered dynamic mattress system designed to treat and/or prevent pressure ulcers. It is designed to replace a standard mattress and fit on most homecare or hospital beds.



SPECIFICATIONS:

Weight Capacity:	400 lbs.
Mattress Dimensions:	80"x36"x7"
Power Unit Dimensions:	10"x8.75"x3.5"
Power input:	Ac 100-120v /60hz
Power unit weight:	5 lbs.
Fuse Rating:	TIA/250V

Enhance DX



The Enhance DX system is a microcontroller-based therapeutic pressure relief system designed for patients up to 500 pounds. The system provides pressure relief by sequentially deflating and inflating alternate air cells on a timed interval.



SPECIFICATIONS:

Weight Capacity:	500 lbs.
Mattress Dimensions:	80" x 36" x 8"
Power Unit Dimensions:	8.3" x 4.5" x 5.5"

Apollo 3-port



The Apollo 3 Port alternating pressure with low air loss utilizes 18 independent 8-inch deep air cells to provide pressure redistribution for the prevention and treatment of Stages I-IV pressure ulcers. Ventilated low air loss bladders include 40 air holes in the sacral and torso areas to help minimize skin maceration by reducing excess moisture under the user.”



SPECIFICATIONS:

Weight Capacity:	350 lbs.
Mattress Dimensions:	80" x 35" x 8"
Power Unit Dimensions:	12.5" x 9" x 4.5"

Sentech 1200



The Sentech 1200 system is a microcontroller-based therapeutic pressure relief system. Integrated air bolsters can be inflated/deflated for resident centering and easier resident transfer.



SPECIFICATIONS:

Weight Capacity:	350 lbs.
Height:	8.5"
Width:	36"
Length:	80"

Sentry 1250



The Sentech 1250 systems are microcontroller-based therapeutic pressure relief systems. The Sentech 1250 supports a weight capacity of up to 500 pounds. The controller provides Low Air Loss through the air cells within the mattress, and also displays the user's pressure in real time.



SPECIFICATIONS:

Weight Capacity:	500 lbs.
Height:	6.5"
Width:	36"
Length:	80"
Weight:	30 lbs.
Electrical Cord Length:	13", 16-18 AWG Hospital Grade

Salute RDX

The Salute RDX system is a microcontroller-based therapeutic pressure relief system designed for patients up to 500 pounds. The system provides pressure relief by sequentially deflating and inflating alternate air cells on a timed interval.



SPECIFICATIONS:

Weight Capacity:	500 lbs.
Mattress Dimensions:	80" x 36" x 8"
Power Unit Dimensions:	13.5" x 8.3" x 5.4"

80" Adapt Pro Elite™

The Adapt Pro Elite™, Alternating Pressure Enhanced Low Air Loss Mattress with Patient Sensing Technology (PST), is the latest technology for the customized treatment and prevention of stages I-IV pressure sores. The Adapt Pro Elite™ Patient Sensing Technology (PST) measures the patient and automatically adjusts to create the patient's optimal therapeutic surface. Low Air Loss is achieved through a unique Ventilated Low Air Loss Cover that enhances therapy and helps to control micro-climate.



SPECIFICATIONS:

Weight Capacity:	400 - 560 lbs.
Mattress Dimensions:	80" x 36"/42" x 8"
Power Unit Dimensions:	16.5" x 9" x 5"

84" Adapt Pro Elite™

The Adapt Pro Elite™, Alternating Pressure Enhanced Low Air Loss Mattress with Patient Sensing Technology (PST), is the latest technology for the customized treatment and prevention of stages I-IV pressure sores. The Adapt Pro Elite™ Patient Sensing Technology (PST) measures the patient and automatically adjusts to create the patient's optimal therapeutic surface. Low Air Loss is achieved through a unique Ventilated Low Air Loss Cover that enhances therapy and helps to control micro-climate.



SPECIFICATIONS:

Weight Capacity:	400 - 560 lbs.
Mattress Dimensions:	84" x 36"/42" x 8"
Power Unit Dimensions:	16.5" x 9" x 5"

Power-Turn Elite®



True Low Air Loss and Lateral Rotation, in a portable system. The Lateral Rotation has either a Small Turn (25 degrees) or a Big Turn (40 degrees). It is designed to replace a standard mattress. Consists of a power unit, a mattress, and a cover. The mattress utilizes 18 independent 9" deep air cells to provide proper pressure redistribution for the prevention and treatment of Stages I-IV pressure ulcers. Lateral Rotation Therapy reduces the risk of pulmonary complications for patients who are immobile.



SPECIFICATIONS:

Weight Capacity:	500 - 650 lbs.
Mattress Dimensions:	80" x 36" x 9"
Power Unit Dimensions:	17" x 10.5" x 7"
Standard Side Bolsters:	10" patented air side rail

Sentry 1400



The Sentech 1400 are microcontroller-based therapeutic pressure relief systems. The Sentech 1400 supports a weight capacity of up to 500 pounds. The controller provides True Low Air Loss while also displaying the user's pressure in real time. Integrated air bolsters can be inflated/deflated for resident centering and easier resident transfer."



SPECIFICATIONS:

Weight Capacity:	500 lbs.
Height:	6.5"
Width:	36"
Length:	80"
Weight:	30 lbs.
Electrical Cord Length:	13", 16-18 AWG Hospital Grade

Medacure Air Stream



The Medacure Air Stream system is a microcontroller-based therapeutic pressure relief system designed for patients up to 500 pounds. The system provides pressure relief by sequentially deflating and inflating alternate air cells on a timed interval. The system also provides Low Air Loss through the flow of air delivered through the mattress cover to aid in maintaining a temperature environment that enhances wound pressure therapy.



SPECIFICATIONS:

Weight Capacity:	500 lbs.
Mattress Dimensions:	80" x 42" x 12"
Power Unit Dimensions:	12" x 12.6" x 6.8"

Stage IV[®] 2000 and 2000 Plus



The Sentech 2000 and 2000 Plus systems are microcontroller-based therapeutic pressure relief systems. The Sentech 2000 supports a weight capacity of up to 500 pounds while the Plus model supports up to 1000 pounds. The controller provides True Low Air Loss while also displaying the user's pressure in real time.



SPECIFICATIONS:

Weight Capacity:	50-500 lbs. (standard). Up to 1000 lbs. (bariatric)
Pump Height:	12.2"
Pump Width:	14.5"
Pump Depth:	6.0"
Weight:	17 lbs. - 19 lbs.
Electrical Cord Length:	13', 16-18 AWG Hospital Grade
Height Range:	46" - 78"
Pressure Range:	5-50 mmHg

Power-Pro[™] Elite Convertible



The Power-Pro[™] Elite Convertible Alternating Pressure Air Mattress System with Gentle Low Air Loss combines two clinically effective therapies: True Low Air Loss and Alternating Pressure, in a portable system. An optional pulsating low air loss therapy feature is available. It is designed to replace a standard mattress. The Power Pro Elite Convertible consists of a power unit, a mattress, and a cover. The mattress utilizes 18 independent 9" deep air cells to provide proper pressure redistribution for the prevention and treatment of Stages I-IV pressure ulcers.



SPECIFICATIONS:

Weight Capacity:	1000 lbs.
Mattress Dimensions:	80" x 36"x 9" / 80" x 42" x 9" / 80" x 48" x 9"
Power Unit Dimensions:	17" x 7" x 10.5"

MicroAIR[®] 65P



The Invacare MicroAIR 65P is a portable alternating pressure mattress with low air loss designed to treat and/or prevent pressure ulcers, otherwise known as bed sores. It is designed to replace a standard mattress. The Invacare MicroAIR 65 consists of a power unit, a power cord, a mattress, and a cover. This alternating pressure, low air loss mattress offers four treatment cycles and pressure monitoring. The Invacare MicroAIR 65 alternates in 5, 10, 15, or 20 minutes cycles. Each cycle distributes air in an alternating cycle between 20 eight-inch bladders.



SPECIFICATIONS:

Weight Capacity:	650 / 1000 lbs.
Mattress Dimensions:	80" x 42"/48" x 10"
Power Unit Dimensions:	15" x 6.5" x 11"

K-2 Kare-Zone™



The KAP Medical KM2KZ system has a digital alternating pressure interface with on-demand low air loss. The system offers an effective means of providing alternating (AP), zero interface pressure therapy (ZIP), with on-demand low air loss. It also features an adjustable high AP and low AP levels, as well as LAL time. The KM2KZ has a wireless auto upright (Fowler) sensor and Smart Support Surface (SSS), providing real time and accurate patient interface pressures below capillary occlusion with enhanced alternating pressure/low air loss therapy for patient comfort.



SPECIFICATIONS:

Weight Capacity:	1000 lbs.
Mattress Dimensions:	80" x 42"/48" x 10"
Power Unit Dimensions:	12 x 7" x 10.5"

Stage IV® 3000 and 3000 Plus



The Sentech 3000 and 3000 Plus systems are microcontroller-based therapeutic pressure relief systems. The Sentech 3000 supports a weight capacity of up to 500 pounds while the Plus model supports up to 1000 pounds. The controller provides True Low Air Loss while also displaying the user's pressure in real time over multiple sections of the air mattress system.



SPECIFICATIONS:

Weight Capacity:	50-500 lbs. (standard). Up to 1000 lbs. (bariatric)
Pump Height:	12.2"
Pump Width:	14.5"
Pump Depth:	6.0"
Weight:	17 lbs. - 19 lbs.
Electrical Cord Length:	13', 16-18 AWG Hospital Grade
Height Range:	46" - 78"
Pressure Range:	5-50 mmHg

Thera-Turn Millennium / Plus



The Sentech Thera-Turn mattress system is a microcontroller-based lateral rotation pressure relief system designed for patients up to 300 pounds for the Thera Turn and 700 pounds for the Thera Turn Plus. The system provides Low Air Loss through the flow of air delivered through the mattress cover to aid in maintaining a temperature environment that enhances wound pressure therapy. The system also provides Lateral Turning, which assists individuals with pulmonary disorders, as well as repositioning, and pressure relief. The controller provides a real time display.



SPECIFICATIONS:

Weight Capacity:	300 lbs. / plus 750 lbs.
Thera Turn Width:	36"
Thera Turn Plus Width:	48"
Length:	80"
Controller Height:	12.2"
Controller Width:	14.5"
Controller Depth:	6.0"
Controller Weight:	17-19 lbs.
Electrical Cord Length:	13", 16-18 AWG Hospital Grade

Dyn-Ergo Scoot Chair

The Dyn-Ergo Scoot Chair features an adjustable seat height and seat depth that enables the user to maneuver the chair with their feet. An adjustable tilt positioning of the chair reduces sliding and slumping for the user. The contoured cushions evenly distribute weight for better user comfort. A wide variety of accessories available, including swing away foot rests, structural lateral supports, elevating leg rests, and other various options.



SPECIFICATIONS:	
Weight Capacity:	250 lbs. - 400 lbs.
Max. Length:	58"
Length - Upright:	31"
Max. Width:	25.5" - 33"
Min. Width:	23.5" - 31"
Seat Width:	16" - 23.5"
Seat Height:	13.5" - 18.5"
Seat-to-backrest Angle:	95 - 115 Degrees

Evolution Mobility Chair

The Evolution chair has many different options for positional needs. The Evolution Mobility Chair features an adjustable seat height and adjustable seat depth that enables users to maneuver and propel with ones arms, feet or both. The seat and tilt of the chair reduces sliding and slumping while contoured cushions evenly distribute weight for better patient comfort and pressure management during long periods of sitting. A wide variety of accessories available, including swing away foot rests, structural lateral supports, elevating leg rests, and other various options.



SPECIFICATIONS:	
Weight Capacity:	250 lbs. - 400 lbs.
Max. Width:	57"
Min. Width:	32"
Overall Width w/Options:	24.5" - 32"
Seat width:	16" - 23.5"
Max. Height:	54.5"
Max. Tilt:	23 Degrees
Seat-to-Backrest Angle:	95 - 115 Degrees
Chair Weight w/o Accessories:	70 lbs. - 89 lbs.

Posturo-Pedic 1000

The Optima Posturo Pedic tilt-in-space chair features a tool-less adjustable seat depth. The Optima Posturo Pedic comes standard with an adjustable elevating leg rest with adjustable foot support. The Optima Posturo Pedic chair comes standard with armrests that are height adjustable for a perfect fit. The Optima Posturo Pedic has an adjustable reclining back that accepts a variety of trunk and head positioning options. The Optima Posturo Pedic also has "drop-arm" armrests and a fold down backrest that facilitate safer lateral transfers and protect the caregiver and resident from costly injuries.



SPECIFICATIONS:	
Seat Width Dimension:	17" / 20"
Seat Height:	20"
Backrest Reclining Angle:	45 Degrees
Seat Tilting Angle:	30 Degrees
Overall Chair Width:	22.5"
Overall Chair Height:	48.75"
Mobility Package	Option Available

Comp-Position Positioning Chair

The Comp-Position chair is designed to be one of the most highly adjustable tilt in space chairs in the marketplace today. The Comp-Position is capable of a 45 degree tilt-in-space angle, allowing a high degree of tilt for users that require it. Other standard features include: Adjustable seat height, width, and depth; Adjustable tilt and recline angle; Adjustable armrest, leg rest, and headrest height.



SPECIFICATIONS:

Weight Capacity:	250 lbs.
Overall Chair Width:	25.75"
Overall Chair Length (upright w/legrest retracted):	34.5 "
Overall Chair Length (reclined & tilted w/legrest extended):	65"
Overall Chair Height (upright w/legrest retracted):	53.25"
Seat to Floor Height:	19" - 21"
Maximum Tilt:	45 Degrees
Backrest Recline Angle Range:	90 - 115 Degrees
Total Weight (without accessories):	104 lbs.

FlexTilt WC19 Transport Chair

The Flex-Tilt WC19 transport chair provides users a cost effective alternative to tilt-in-space, vehicle safe transport chairs. The Flex-Tilt chair comes in many different chair dimensions, as well as has many adjustable points to customize the chair to the user.



SPECIFICATIONS:

Weight Capacity:	350 lbs.
Frame Gauge Steel:	11g - 16g
Degree of Tilt:	25 Degrees
Seat Width Options:	16", 20", 24"
Seat Depth Options:	16.5", 21.5"
Adjustable Seat Height:	12.5" - 17.5"
Back Seat Height:	32"
Seat Height Adjustability:	19.5" - 21.5"
Manufacturer's Warranty:	3 year frame & 1 year components

The EZ Transport Chair

The EZ Transport Chair from Harris Medical is a new unique multipurpose chair that can adjust from chair, to exam table, to stretcher. The versatility of this chair allows facilities to use their own transport vehicles rather than a costly outside transport vendor to provide a non-emergency stretcher ambulance for the resident. The EZ Transport Chair utilizes a no lift system that solves almost all of transport issues that require an outside transport vendor.



SPECIFICATIONS:

Weight Capacity:	500 lbs.
Seat Dimension:	20" W x 20" L
Overall Chair Width:	25"
Frame Warranty:	24 Months
Seat and Cushion Warranty:	12 Months
Note:	WC-19 Compliant

Rock-King X3000

The Rock-King X3000 is a wheelchair that is designed to either be used like a regular chair, a tilt in space wheelchair, or a rocking chair. The Rock-King X3000 has many different options for positional needs; Upright Position, Rocking Mode, and Tilt-in-Space Position.



SPECIFICATIONS:

Weight Capacity	350 lbs.
Seat Height from Floor (Adjustable in 1-inch increments)	15" - 21"
Overall Width	28.5"
Chair Weight (no accessories)	63 lbs.
Overall Length (without footrests)	32"
Seat Width	20"
Seat Depth	16"
Height of Backrest from Seat	32"
Limited Warranty:	Frame - 7 years, Sling Seat and Cushions - 1 year

RNG 2000

The Rock N Go 2000 is a wheelchair that is designed to either be used like a regular chair, a tilt-in-space wheelchair, or a rocking chair. The Rock N Go 2000 has many adjustable components, including; adjustable seat height, lateral support height, footrest type, footrest height, and cushion color.



SPECIFICATIONS:

Weight Capacity:	350 lbs.
Seat Height:	16" - 19"
Seat Dimension:	20" W x 16" L
Overall Chair Width:	28.5"
Frame Warranty:	7 years
Sling Seat and Cushion Warranty:	1 year
Chair Weight:	63 lbs.
Overall Width:	28.5"

Convertible I-Series (I-400, I-700)

The Barton Convertible I-Series chair and the Patient Transfer System (PTS) are designed to enable a single caregiver to transfer and frequently reposition a bariatric user with limited or no ability to ambulate. The Barton I-400 and Barton I-700 chairs can function as: A stretcher, an upright mobile chair, or a tilt-in-space chair. The Barton Convertible chairs allow for easy lateral transfers with the PTS while the chair is in the stretcher position. The Barton Chair has heavy duty central locking/steering casters to create a safer and easier to transfer wheelchair.



SPECIFICATIONS:

The I-400 Convertible® Chair (Net weight: 191 lbs.)	
Weight Capacity:	400 lbs.
Overall Width:	29.5"
Seat Width/Depth:	21" / 19"
The I-700 Convertible® Chair (Net weight: 206 lbs.)	
Weight Capacity:	700 lbs.
Overall Width:	35"
Seat Width/Depth:	25" / 19"

Revive Shower Commode

This Broda Revive Shower Commode Chair provides exceptional comfort with both tilt-in-space and reclining positional adjustments. It is designed for users who are caregiver dependent for their shower and commode needs. Broda's unique Comfort Tension Seating system provides user comfort, and ease of cleaning within the shower environment.

BRODA



SPECIFICATIONS:

Weight capacity:	400 lbs.
Seat Depth:	18"
Seat dimension:	18" or 20" W x 16" L
Floor to Seat Height:	24.5"
Frame Warranty:	10 years
Adjustable Posterior Tilt:	12 Degrees
Anterior Tilt (for sit/stand assist):	10 Degrees
Back Recline:	67 Degrees
Seat and Cushion Warranty:	2 years on manufacturer defect

Varying Standard Wheelchair Width Options

We provide a variety of wheelchairs from differing manufacturers. The wheelchairs come in varying sizes and weight capacities to fit the needs of the user.

GEMCO
MEDICAL

GENDRON
by graham-field

for the road ahead
drive

INVACARE
Yes, you can.



SPECIFICATIONS:

Weight Capacity:	250 lbs. - 700 lbs.
Seat Width:	18" / 20" / 22" / 24" / 26" / 28" / 30" / 32" / 34"
Seat Depth:	Varies by type of chair
Seat Height:	Varies by type of chair

Varying High-Back Reclining Wheelchair Width Options

We provide a variety of high-back reclining wheelchairs from differing manufacturers. The wheelchairs come in varying sizes and weight capacities to fit the needs of the user.

for the road ahead
drive



SPECIFICATIONS:

Weight Capacity:	300 lbs. - 450 lbs.
Seat Width:	16" / 18" / 20" / 22"
Floor to Seat Height:	21"
Back Height:	21" / 22" / 31" / 33"
Seat Depth:	Varies by type of chair
Seat Height:	Varies by type of chair

UNO



The Genadyne UNO is a single patient use disposable Negative Pressure Wound Therapy System that is indicated for: Incision Management, Traditional Wounds that are indicated for regular NPWT except that they must have low drainage and shallow depth (2 mm or less), The Genadyne UNO is a user-friendly pump with: a simple and easy to use interface, Continuous or Variable Therapy modes and a Disposable 7 Day or 15 Day Pump Variation for cost savings. Genadyne Uno Interface Features: Low Battery Indicator, Alert Silencer feature, and Therapy Mode Alteration (Continuous/ Variable Mode).



GENADYNE

SPECIFICATIONS:

Battery Power:	5 x AA Batteries
Height:	3"
Width:	2.25"
Length:	4.375"
Weight:	0.5 lbs
Operating Time:	7 or 15 Days
Maximum Suction:	125 mmHg

Genadyne XLR8



The Genadyne XLR8 wound vac provides an easy to use and intuitive pump to assist patients that have a need of negative pressure. The Genadyne XLR8 pump provides: A Clear and Visible Display. Simple, Lockable Controls. Easy and intuitive programming and maintenance. Supports Multiple Language. Whisper Quiet Operation. The XLR8 provides the caregiver, in real time, the total treatment time, display of the target pressure, as well as the quality of the suction. The XLR8 allows the user to select the type of therapy specified by the physician: continuous or variable/ intermittent.



GENADYNE

SPECIFICATIONS:

Lithium Battery Life:	12 hours, 3 hours to fully charged
Electrical Power:	19 VDC, 1.57A 30W (Min), 20 VDC (Max)
Height:	2.1"
Width:	3.9"
Length:	5.9"
Weight:	13 lbs. - 15 lbs, depending on canister attached
Suction Capacity:	4.0 Liters Per Minute

Reliant 450 Battery-Powered Lift



The Invacare Reliant 450 Lift is designed for individuals who have trouble standing and navigating independently. This lift aids the patient and caregiver during patient transfer by safely and securely raising and lowering patients from any stationary position.



SPECIFICATIONS:

Weight Capacity:	450 lbs.
Boom Height:	24" - 74"
Base Width:	41" Open - 26.5" Closed
Base Clearance:	4.5"
Product Weight:	106 lbs.
Casters:	3" Front 5" Rear
Scale:	Available Upon Request

Reliant 600 Heavy-Duty Power Lift



The Invacare Reliant 600 Lift is designed for individuals who have trouble standing and navigating independently. This lift aids the patient and caregiver during patient transfer by safely and securely raising and lowering patients from any stationary position.



SPECIFICATIONS:

Weight Capacity:	600 lbs.
Boom Height:	28" - 68"
Base Width:	41" Open - 26.5" Closed
Base Clearance:	4.5"
Product Weight:	112 lbs.
Casters:	3" Front 5" Rear
Scale:	Available Upon Request

PrimePlus® 600 Lift



The Primus Plus 600 Lift is designed for individuals who have trouble standing and navigating independently. These lifts aid the patient and caregiver during patient transfer by safely and securely raising and lowering patients from any stationary position.



SPECIFICATIONS:

Weight Capacity:	600 lbs.
Boom Height:	29.5-69.5"
Base Width:	39.5" open 25.5" closed
Base Height:	4.25"
Base Clearance:	6"
Product Weight:	115 lbs.
Scale:	Available Upon Request

Drive 600 Lift

The Drive Medical 600 Lift is designed for individuals who have trouble standing and navigating independently. These lifts aid the patient and caregiver during patient transfer by safely and securely raising and lowering patients from any stationary position.



SPECIFICATIONS:

Weight Capacity:	600 lbs.
Boom Height:	32" - 75.5"
Base Width:	45.75" Open 25" Closed
Base Height:	4.5"
Base Clearance:	2"
Product Weight:	132 lbs.
Casters:	3" Front 4" Rear
Drive Sling (Sm., Med., Lg., XL -Sale Only):	Purchase Required

Hoyer® HPL600

The Hoyer 600 Lift is designed for individuals who have trouble standing and navigating independently. This lift aids the patient and caregiver during patient transfer by safely and securely raising and lowering patients from any stationary position.



SPECIFICATIONS:

Weight Capacity:	600 lbs.
Boom Height:	29.5" - 69.5"
Base Width:	39.5" Open -25.5" Closed
Base Height:	4.25"
Product Weight:	115 lbs.
Casters:	3.5" Front 5" Rear
Lift Range of Boom:	23" - 63"
Scale:	Available Upon Request

Hoyer® HPL700

The Hoyer 700 Lift is designed for individuals who have trouble standing and navigating independently. This lift aids the patient and caregiver during patient transfer by safely and securely raising and lowering patients from any stationary position.



SPECIFICATIONS:

Weight Capacity:	700 lbs.
Boom Height:	46.5" - 57.75"
Base Width:	46.25" Open -27.5" Closed
Base Height:	4.5"
Product Weight:	150 lbs.
Casters:	3" Front 4" Rear
Lift Range of Boom:	23" - 63"
Scale:	Available Upon Request

Maxi Care Bariatric Lift

The Gendron Maxi Care Lift is designed for individuals who have trouble standing and navigating independently. These lifts aid the patient and caregiver during patient transfer by safely and securely raising and lowering patients from any stationary position.

GENDRON
by graham-field



SPECIFICATIONS:

Weight Capacity:	700 lbs.
Boom Height:	32.75" - 73.75"
Base Width:	61" - 63.5"
Base Height:	4.75"
Base Clearance:	2"
Casters:	3" Front 5" Rear
Scale:	Optional
Gendron Hammock Sling:	Purchase Required

Titan-X® Mobile Lift

The Tollos Titan-X Lift is designed for individuals who have trouble standing and navigating independently. These lifts aid the patient and caregiver during patient transfer by safely and securely raising and lowering patients from any stationary position.

tollos
lightening the load of care



SPECIFICATIONS:

Weight Capacity:	1000 lbs.
Boom Height:	22" - 65.5"
Base Width:	34.5" - 49"
Base Clearance:	4.5"
Product Weight:	300 lbs.
Casters:	3" Front 5" Rear
Slings:	Purchase Required

Hoyer® Pro 300 Stand Aid

The Hoyer Pro Stand 300 is designed for individuals who retain some upper body control, but have trouble standing independently. The lift aids the patient and caregiver during patient transfer because it mimics a natural standing motion for a patient and eliminates manual lifting for the caregiver. The Hoyer Pro Stand 300 includes the following features: Anti-Slip Contoured Footboard, Height Adjustable Padded Knee Support, Large Caster Wheels and Rechargeable Battery Pack.

Joerns
HEALTHCARE



SPECIFICATIONS:

Weight Capacity:	300 lbs.
Product Weight:	100 lbs.
Product Width:	24-48"
Product Length:	46-48"
Overall chair width:	28.5"
Base Clearance:	4"
Range of Boom:	44-64"
Sling/noodle:	Purchase Required

Sit To Stand Assist Lift

The Drive Sit To Stand Assist Lift is designed for individuals who retain some upper body control, but have trouble standing independently. The lift aids the patient and caregiver during patient transfer because it mimics a natural standing motion for a patient and eliminates manual lifting for the caregiver. The Drive Stand Assist Lift includes the following features: Non-Skid Footboard, Height Adjustable Padded Knee Support, Large Caster Wheels and Rechargeable Battery Pack.



SPECIFICATIONS:

Weight Capacity:	400 lbs.
Product Weight:	113 lbs.
Product Base Width:	40" Open 24.5" Closed
Product height:	26-81"
Base Clearance:	4.5"
Casters:	3" Front 4" Rear

Detecto IB 800 In-Bed Scale

The Detecto IB800 In-Bed Scale is designed to lift a patient inches from the bed to achieve the weighing of bedridden, non-ambulatory patients. The Detecto IB800 In-Bed Scale includes the following features: Manual Hydraulic Pump, Base Legs and Cradle.



SPECIFICATIONS:

Weight Capacity:	800 lbs.
Boom Height:	38.25-73"
Base Width:	21" closed 58.4" open
Base Clearance:	4.8"
Stretcher:	72"
Shipping Weight:	400 lbs.
Casters:	3"

Sedens 500

The Apex Chair Cushion is a portable, microprocessor controlled therapeutic pressure relief seat cushion. The alternating pressure provides pressure relief by sequentially deflating and inflating alternate air cells on a timed interval. Through the alternating air cells, the system alleviates the areas of constant pressure and enhances circulation. The amount of pressure to support the patient can be set manually for custom configurations.



SPECIFICATIONS:

Weight Capacity:	260 lbs.
Controller Dimensions:	25" H x 12.5" W x 5.7" D cm
Controller Weight:	2.2 lbs
Cushion:	16" L x 16 W x 2.5" H, 17" L x 17" W, 18" L x 18" W
Cycle Time:	10 / 15 / 20 Min Selectable
Battery Charge Time:	4.5 Hours
Battery Operating Time:	Approximately 12 Hours

Mobile Air Chair

The Mobile Air Chair is a portable, microprocessor controlled therapeutic Pressure Relief seat cushion. The alternating pressure provides pressure relief by sequentially deflating and inflating alternate air cells on a timed interval. The system alleviates these areas of constant pressure and enhances circulation. The amount of pressure to support the patient can be set manually for custom configurations. All patient settings are stored in the memory when the power is turned off.



SPECIFICATIONS:

Weight Capacity:	300 lbs.
Controller Dimensions:	8" H x 8" W x 4" D
Controller Weight:	7.5 lbs
Cushion:	18" L x 18" W x 2.5" H
Cushion:	22" L x 18" W (Bariatric), 26" L x 22" W (Bariatric)
Cycle Time:	2 - 4 Min
Custom Pressure Setting:	25 to 80 mmHg - Float Mode
Custom Pressure Setting:	40 to 80 mmHg - Alternating
Light:	20 Seconds - Illuminates Screen

Chair-Air™ Model 9700CAF

The Blue Chip Chair-Air alternating air wheelchair cushion has four individual bladders that alternate to provide the patient a superior pressure redistribution seating surface while the unique molded design, with slight abductor pommel, stabilizes the hips and keeps the patient in proper mid-line alignment. The zippered non-skid, stretch-knit cover is anti-microbial and fire-retardant. The Chair-Air is utilized in the prevention and treatment of pressure ulcers. Chair-Air meets California Technical Bulletin #117 for fire retardancy.



SPECIFICATIONS:

Weight Capacity:	250 lbs.
Controller Dimensions:	14.5" L x 5" W x 12.5" H
Controller Weight:	1.6 lbs
Cushion:	18"L x 16"W x 3"H
Weight:	3 lbs.
Cycle Time:	10, 15 or 20 Min

Optiflex® 3 Knee CPM

The Chattanooga OptiFlex3 Knee CPM (Continuous Passive Motion) is designed to provide rehabilitative therapy to an injured or post-operative knee by moving the knee joint through a range of motion for extended periods of time. This type of therapy increases the range of motion and reduces post-surgery recovery time.



SPECIFICATIONS:

Weight Capacity:	350 lbs.
Weight:	27 lbs.
Length:	37"
Electrical Class:	Class I
Electrical Type:	Type B
Mode of Operation:	Continuous
Flexion:	120 Degrees Maximum
Extension:	-10 Degrees Maximum Hyper Extension
Note:	Soft Goods are For Sale Only

OptiFlex®-K1

The Chattanooga OptiFlex K1 is designed to provide rehabilitative therapy to an injured or post-operative knee by moving the knee joint through a range of motion for extended periods of time. This type of therapy increases the range of motion and reduces post-surgery recovery time.



SPECIFICATIONS:

Weight:	23 lbs
Length:	38"
Other:	Wide low-profile, closed-base frame for stability
Drive:	Single screw
Footplate:	Reversible for shorter legs
ROM:	-10 - 120
Accommodates patients:	4' - 6.6'
Warranty:	Two-year
Note:	Soft Goods are For Sale Only

Dc2480 Knee CPM

The McKelor Knee CPM (Continuous Passive Motion) is designed to deliver comfortable, rehabilitative therapy to an injured or post-operative knee. The McKelor CPMs provide an open carriage design and easy to program hand-held controls.



SPECIFICATIONS:

Weight:	26 lbs.
Length:	27.375"
Adjustable Length:	42"
Width:	13"
Range of Motion:	-10 - 120 degrees
Pause:	0 - 30 seconds
Limb, Calf and Thigh Length:	20" - 42", 11" - 24", 9" - 18"
Note:	Footplate is Reversible for Shorter Legs
Note:	Soft Goods are For Sale Only

Phoenix Model 1850 Knee CPM

The McKelor Knee CPM (Continuous Passive Motion) is designed to deliver comfortable, rehabilitative therapy to an injured or post-operative knee. The McKelor CPMs provide an open carriage design and easy to program hand-held controls.



SPECIFICATIONS:

Weight:	26 lbs.
Length:	28"
Adjustable Length:	42"
Width:	13"
Range of Motion:	-5 to 110 degrees
Pause:	0 to 30 seconds
Limb, Calf and Thigh Length:	20 - 42", 11" - 24", 9" - 18"
Note:	Footplate is Reversible for Shorter Legs
Note:	Soft Goods are For Sale Only

PulSTAR® Logix® DVT

The Pulstar Logix Pump is designed to allow for single or dual limb operation. It has kink-resistant tubing with customizable pressure for effective and personalized therapy. Lightweight design, at 5 lbs. Color coded tubing for easy limb identification. Optimum therapeutic pressure customizes pressure to each limb. Safety connectors will not connect to other hospital equipment. LCD screen easily visible from multiple angles. Pause feature allows therapy to be suspended and resumed on demand.



SPECIFICATIONS:

Product Weight:	5 lbs.
Tubing Length:	8"
Calf Circumference of the Garment Sizes	
Regular:	11" - 19"
Overize:	19.25" - 26.5"
Foot Wrap Circumference	
Regular:	7.5" - 12"
Large:	12.5" - 16"

SR193 Under-Bed Weighing System

The SR193 Under-Bed Scale System employs a microprocessor and load cell technology to provide accurate, and repeatable weight data. Four (4) identically matched transducers are strategically placed to ensure an accurate representation of the patient's weight. The Sr193 Under-Bed Scale weight is displayed on a 16-character dot matrix LCD. With a push of a button, weight data may be viewed in either pounds or kilograms, with a displayed resolution of 0.1 for each. The SR193 Under-Bed Scale System is a portable bed scale system designed for bed-ridden, non-ambulatory patients.

SR® Instruments, Inc.



SPECIFICATIONS:

Weight Capacity:	1200 lbs.
Display Resolution:	0.1 lbs.
Accuracy:	0.1% +/- 1 digit of displayed resolution for calibrated image
Power Source:	110 or 220 VAC, 50-60 Hz.

Thera-Glide® Safety Glider



The Optima Thera Glide provides the soothing sensation of gliding, similar to other gliders in the market, but also blends safety, comfort, and modernity into the product.

The Optima Thera Glide's patented automatic immobilization mechanism keeps the chair in a fixed position when the user is getting up. This same mechanism also allows gliding when the user is fully seated, with their back resting up against the back of the chair. Infinite locking positions. Customizable Fabric Options. Upholstered Side Panels. Customizable Wood Stain Finish. Cherry, Natural, Mahogany, Walnut, and Ebony.



SPECIFICATIONS:

Weight Capacity:	350 lbs. - 450 lbs.
Total height:	42.5" to 47"
Seat-to-floor height:	Adjustable from 16" to 19"
Total width:	22" -29.5"
Seat width:	16.5" - 23.5"
Seat-to-armrest height:	7" - 8"
Seat depth:	17" - 18"
Backrest height:	28" - 31"
Weight:	58 lbs. - 75 lbs.

Powered Recliner w/ Stand & Lift Assist

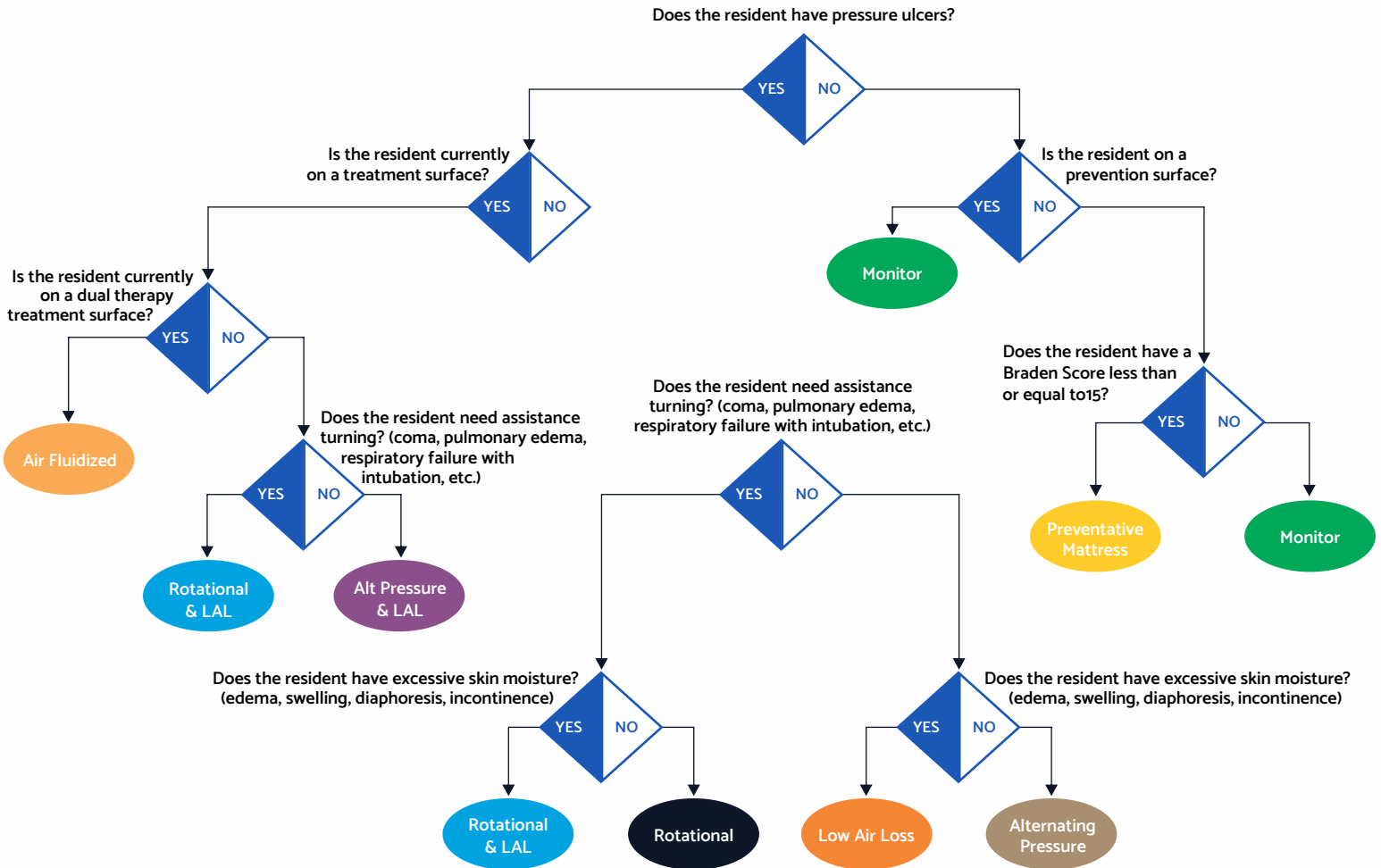
The IOA Motorized Recliner with Patient Lift Assist is a motorized recliner chair. Like all recliners, the back of the chair can open up, to allow the user to lay down in any position, including completely flat, and comfortably relax within the chair. The chair also has a vertical lift feature that can elevate the chair to make it easier to step out of the chair in an upright position.



SPECIFICATIONS:

Weight Capacity:	350 lbs.
Seat depth:	23"
Seat dimensions:	24" W x 16" H
Chair dimensions:	31" W x 42" D x 46" H
Warranty:	Complete coverage by all-inclusive 12 year warranty.

CHE SUPPORT SURFACE ADVISOR (VERSION 1.2)



DISCLAIMER

This tool is intended to be used as a guide prior to consultation with the patient's physician and wound care team regarding a patient's condition. This tool in no way supercedes the physician directives, treatment guidelines, or established facility guidelines. Always consult a physician prior to selection of a support surface.

PHONE: 866.603.6598

FAX: 724.548.5454

WWW.CHEWEB.NET

CONTINENTAL HEALTH EQUIPMENT INC.

529 BUTLER ROAD

KITTANNING, PA 16201



CONTINENTAL
HEALTH
EQUIPMENT