

Dedicated to Service and Solutions

WWW.CHEWEB.NET

# PRODUCT CATALOG 2025

SUPPORT SURFACES / CHAIRS / BED FRAMES / OTHER DEVICES



CONTINENTAL HEALTH EQUIPMENT, INC.



## INDEX

Equipment Legend	PAGE 3
Support Surface Therapy Coding / Sale or Rent Only	PAGE 3

## INSTANT ACCESS USER MANUALS

QR Code bar code stickers on all our equipment	PAGE 4
--	--------

## BED FRAMES

PrimeCare PCB903	PAGE 5
PrimePlus 1750/1752	PAGE 5
PrimePlus 2000/2002 & Primus 1000	PAGE 5
PrimePlus P750	PAGE 6
AllCare™ Floor Level Low Bed	PAGE 6
Accora Floor Bed	PAGE 6
Accora Floor Bed Plus	PAGE 7
Maxi Rest 42/SR	PAGE 7
King's Pride 1000	PAGE 7
Low Bed 800	PAGE 8
Queen's Pride 600LM-Convertible	PAGE 8
Slide-W-I-D-E™ 7100	PAGE 8
UltraCare® 770, 790 and XT	PAGE 9

## THERAPY SUPPORT SURFACES

80" Adapt Pro Elite™	PAGE 10
Apollo 3-port	PAGE 10
Power-Turn Elite®	PAGE 10
84" Adapt Pro Elite™	PAGE 11
Salute RDX	PAGE 11
Enhance DX	PAGE 11
Thera-Turn Millennium	PAGE 12

## SPECIALTY CHAIRS/WHEELCHAIRS

Broda Midline Tilt in Space Chair	PAGE 13
Broda Traversa Chair	PAGE 13
Broda Synthesis Chair	PAGE 13
Broda Encore Rocking Chair	PAGE 14
FlexTilt WC19 Transport Chair	PAGE 14
Dyn-Ergo Scoot Chair	PAGE 14
Evolution Mobility Chair	PAGE 15
Posturo-Pedic 1000	PAGE 15
Comp-Position Positioning Chair	PAGE 15
Rock-King X3000	PAGE 16
Convertible I-Series I-400	PAGE 16
Convertible I-Series I-700	PAGE 16
Varying Standard Wheelchair Width Options	PAGE 17
Varying High-Back Reclining Wheelchair Width Options	PAGE 17

## PATIENT LIFTS

Drive 600 Lift	PAGE 18
Sit To Stand Assist Lift	PAGE 18
Med Rizer 600 lb Lift	PAGE 18
Med Rizer 1000 lb Lift	PAGE 19
Hoyer® HPL700	PAGE 19
Hoyer® Pro 300 Stand Aid	PAGE 19
Titan-X® Mobile Lift	PAGE 20
Maxi Care Bariatric Lift	PAGE 20

## NEGATIVE PRESSURE WOUND THERAPY

Genadyne XLR8	PAGE 21
Accessories for Negative Pressure Wound Therapy	PAGE 21

## MISCELLANEOUS ITEMS

Powered Recliner w/ Stand & Lift Assist	PAGE 22
PulSTAR® Logix® DVT	PAGE 22
Chair-Air™ Model 9700CAF	PAGE 22
Sedens 500	PAGE 23
Optiflex® 3 Knee CPM	PAGE 23
OptiFlex®-K1	PAGE 23
Thera-Glide® Safety Glider	PAGE 24
Foam Mattresses	PAGE 24

## ADVISOR

CHE Support Surface Advisor	PAGE 25
-----------------------------	---------

## EQUIPMENT LEGEND



This piece of equipment can be ordered to fit bariatric patients. See each equipment description for detailed product dimensions for detailed product dimensions and weight capacities.



This support surface comes with side air bolsters.



This support surface comes with side bolsters made of foam.



This product contains Visco Elastic foam, commonly referred to as "Swedish Foam" or "Memory Foam".



This product has built in Hi-Lo functionality. These devices can help with fall prevention, restraint reduction and no lift procedures.



This piece of durable medical equipment can help you fulfill your facilities "Fall Prevention" program.



This piece of durable medical equipment can help you fulfill your facilities "Restraint Reduction" program.



This piece of durable medical equipment can help you fulfill your facilities "No Lift" program.

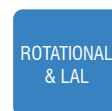


This product can help you heal wounds and can be used in wound care formularies and protocols

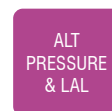
## SUPPORT SURFACE THERAPY CODING



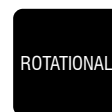
Continental Health Equipment does not currently carry any Air Fluidized Systems. Common names for these systems include "Bead Bed" or "Clinitron".



Rotational and Low Air Loss Combination systems provide both rotational therapy as well as low air loss therapy simultaneously.



Low Air Loss and Alternating Pressure Combination systems provide both alternating pressure therapy as well as low air loss therapy simultaneously.



Rotational systems provide lateral rotation therapy to the resident.



Low Air Loss Combination systems provide low air loss therapy.



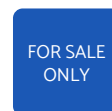
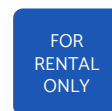
Alternating Pressure systems provide alternating pressure therapy to the resident. Continental Health Equipment carries both full replacement mattress systems and seating surfaces that use alternating pressure therapy.



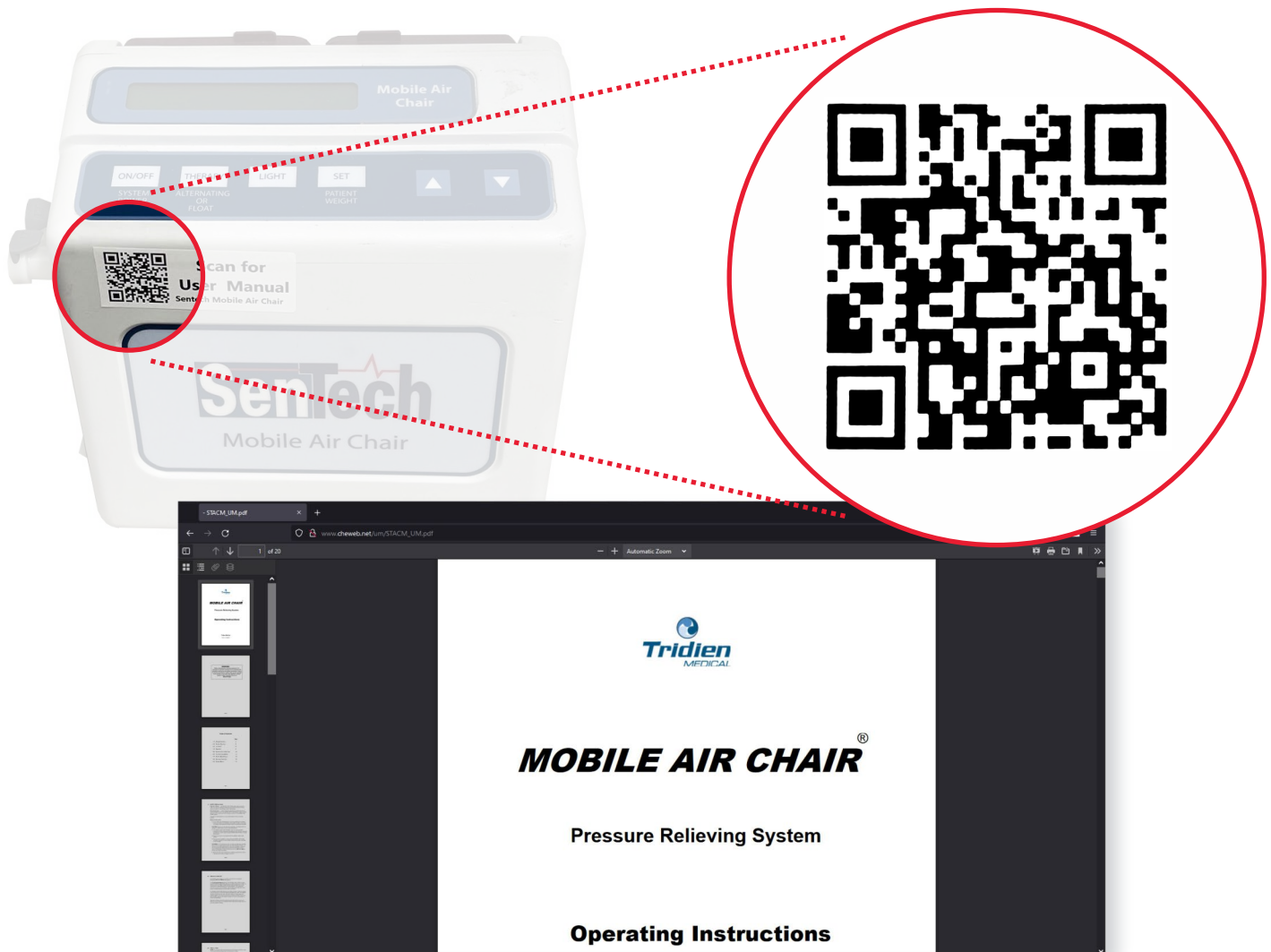
The resident is a candidate for wound prevention. Consider using the appropriate combination of seating and sleeping surfaces that will limit the risk of pressure ulcer development. The seating and sleeping surfaces that will help prevent pressure ulcers maybe any combination of gel, foam, or air system.



It does not seem as though the resident is at risk for the development of pressure ulcers. Continue to monitor the resident in accordance with your facilities standard procedures and protocols.



### EVER NEED INSTANT ACCESS TO A MANUFACTURER'S USER MANUAL FOR MEDICAL EQUIPMENT?



Continental Health Equipment places QR Code bar code stickers on all our equipment, so you can instantaneously access the Equipment User Manual. Simply scan the QR Code with your smart phone camera and a copy of the manual will appear in your web browser.



## PrimeCare PCB903



A Five Function Hand Remote is able to adjust; head section height, bed frame height, foot section height, simultaneous head and foot height, and the under bed light. Trendelenburg is available through the Staff Control feature on the footboard. Assist Rails are optional.



### SPECIFICATIONS:

Max. Weight Capacity:	600 lbs.
Bed Width:	36"
Bed Width w/Extension:	42"
Bed Deck Length:	80", 84", 88"
Lifting Range:	7" - 30"
Profiling Functions:	Trendelenburg/Reverse Trendelenburg
Caster Lock:	Yes
Wall Guard:	Yes
Heel Lift Ratchet:	Yes

## PrimePlus 1750/1752



The bed is capable of expanding to accept a 48" wide mattress, making it an excellent high capacity choice. Tool-free push button expansion pans allow the user to expand the bed quickly. Heavy duty locking casters reside on all four corners of the bed. Thick padded side rails lock into multiple positions quickly.



### SPECIFICATIONS:

7100 Weight Capacity:	500 lbs.
9100 Weight Capacity:	600 lbs.
Convertible Size:	35-39-42" x 82"
Fully Expanded Bariatric Size:	42" x 82"
7100 Bed Height from Floor:	7.95" - 30"
9100 Bed Height from Floor:	7" - 30"
Assist Rails:	Optional

## PrimePlus 2000/2002 & Primus 1000



The bed is capable of expanding to accept up to a 54" wide mattress, making it an excellent high capacity choice. Tool-free push button expansion pans allow the user to expand the bed quickly. Heavy duty locking casters reside on all four corners of the bed. Thick padded side rails lock into multiple positions quickly.



### SPECIFICATIONS:

Maximum Weight Capacity:	1000 lbs.
Overall Length with Head and Footboard:	92"
Overall Width:	40.5 lbs.
Overall Width with Extension to Pins:	39, 42, 48, 54"
Length of Mattress Deck:	80 - 88"
Mattress Deck Height - in Lowest Position:	19"
Mattress Deck Height - in Highest Position:	32"
Pendant Connections on Both Sides of Bed:	Yes
Patient Scale:	Yes

### PrimePlus P750

The bed is capable of expanding to accept a 48" wide Mattress, also expands in length to 88". Tool-free push button expansion pans allow the user to expand quickly. Four heavy duty locking casters, roll easy at any height and lock secure.



*for the road ahead*  
**drive**

#### SPECIFICATIONS:

Maximum Weight Capacity:	750 lbs.
Built-in-Width Expansion:	39", 42", 48"
One step Locking:	Yes
Sleep Surface:	80" - 84" - 88"
Warranty:	15 year on Frame. Year on Electrical and Mechanical. Lifetime on all welds.
Freestanding Trapeze:	Optional
Patient Scale:	Optional

### AllCare™ Floor Level Low Bed



The Med Mizer Allcare Bed frames have the ability to lower to 3.6" off the floor, providing more fall safety for residents. The Med Mizer Allcare Bed is highly adjustable, accommodating users of all body types. The frame can extend from 80" to 84" in length, providing the length adjustment needed for taller users. The frame can extend from 35", to 39", to 42" in width, providing the width adjustment needed for wider users. Includes: Four Function Hand Remote.



**MED MIZER®**

#### SPECIFICATIONS:

Weight Capacity:	600 lbs.
Deck Height (low position):	3.6"
Deck Height (high position):	25"
Sleep Surface:	Convertible from 35" to 39" to 42" W by 80" or 84" L
Assist Rails:	Optional

### Accora Floor Bed



The Accora Floor Bed was developed to provide comfort and ease of operation to patients and caregivers. The Floor Bed frames have the ability to lower to 2.8" off the floor, providing more fall safety for residents. The frame also has the ability to extend from 80" to 84" in length, providing the adjustability needed for healthcare providers.



**Accora**  
Innovators in Care

#### SPECIFICATIONS:

Weight Capacity:	800 lbs.
Deck Height (low position):	9.5"
Deck Height (high position):	25.5"
Sleep Surface:	Convertible from 35.5" to 38.5" to 41.5" to 47.5" W by 80" L

## Accora Floor Bed Plus

The Accora Floor Bed was developed to provide comfort and ease of operation to patients and caregivers. The Floor Bed frames have the ability to lower to 2.8" off the floor, providing more fall safety for residents. The frame also has the ability to extend from 80" to 84" in length, providing the adjustability needed for healthcare providers.



### SPECIFICATIONS:

Weight Capacity:	330 lbs.
Deck Height (low position):	2.8"
Deck Height (high position):	25.6"
Sleep Surface:	36" x 80-84"

### Floor Bed Plus

Weight Capacity:	496 lbs.
Deck Height (low position):	3.1"
Deck Height (high position):	25.6"
Sleep Surface:	42" x 80-84"

## Maxi Rest 42/SR

The frame provides width adjustability as a standard feature, ranging from 39" wide to 42" wide to 48" wide. Includes: Four Function Hand Remote.



### SPECIFICATIONS:

Weight Capacity:	800 lbs.
Convertible Size:	39" x 80"
Fully Expanded Bariatric Size:	48" x 88"
Bed Height from Floor:	15" to 29"
Assist Rails:	Optional
Patient Scale:	Optional

## King's Pride 1000

The frame provides width adjustability as a standard feature, ranging from 39" wide to 42" wide to 48" wide. Includes: Four Function Hand Remote and Adjustable Width Pans.



### SPECIFICATIONS:

Weight Capacity:	1000 lbs.
Convertible Size:	39" x 80"
Fully Expanded Bariatric Size:	48" x 80"
Bed Height from Floor:	15" to 28"
Assist Rails:	Optional
Assist Bars:	Optional
Trapeze:	Optional

## Low Bed 800

The frame provides width adjustability as a standard feature, ranging from 39" wide to 42" wide to 48" wide. The bed frame also has the ability to lower to 8" off the floor, providing more fall safety for residents that would use the bed. Includes: Four Function Hand Remote and Adjustable Width Pans.



### SPECIFICATIONS:

Weight Capacity:	1000 lbs.
Convertible Size:	39" x 80"
Fully Expanded Bariatric Size:	48" x 80"
Bed Height from Floor:	11.25" to 25"
Assist Rails:	Optional
Assist Bars:	Optional
Trapeze:	Optional

## Queen's Pride 600LM-Convertible

The frame provides width adjustability as a standard feature, ranging from 39" wide to 42" wide to 48" wide. Includes: Three Function Hand Remote and Adjustable Width Pans.



### SPECIFICATIONS:

Weight Capacity:	750 lbs.
Convertible Size:	39" x 80"
Fully Expanded Bariatric Size:	48" x 80"
Bed Height from Floor:	15" to 28"
Assist Rails:	Optional
Assist Bars:	Optional
Trapeze:	Optional

## Slide-W-I-D-E™ 7100

The frame provides width adjustability as a standard feature, ranging from 35" wide to 39" wide to 42" wide. The bed frame also has the ability to lower to 8" off the floor, providing more fall safety for users. Includes: Five Function Hand Remote and Adjustable Width Pans.



### SPECIFICATIONS:

7100 Weight Capacity:	500 lbs.
9100 Weight Capacity:	600 lbs.
Convertible Size:	35-39-42" x 82"
Fully Expanded Bariatric Size:	42" x 82"
7100 Bed Height from Floor:	7.95" - 30"
9100 Bed Height from Floor:	7" - 30"
Assist Rails:	Optional



## UltraCare® 770, 790 and XT



The Joerns Ultra Care Beds come in three different models. Each model was developed to provide comfort and ease of operation to patients and caregivers. The bed frames have the ability to lower to either 7" or 9" off the floor, providing more fall safety for residents and raise to 30" for caregiver comfort and safety. A Hand Control and Staff Control are included with the bed. Assist rails and a length extension kit are optional.



### SPECIFICATIONS:

Weight Limit Capacity:	500 lbs.
770 Dimensions:	80"L x 35"W x 7"H
790 Dimensions:	80"L x 35"W x 9"H
XT Dimensions:	82"L x 35"W x 7"H
Weight: 770: 220 lbs., 790: 250 lbs., XT (base): 220 lbs.	
Weight of XT (equipped with dual ultra-locks):	274 lbs.
Minimum height for the 770/XT:	7"
Minimum height for the 790:	9"
Maximum height for mattress support surface:	30"

## 80" Adapt Pro Elite™

The Adapt Pro Elite™, Alternating Pressure Enhanced Low Air Loss Mattress with Patient Sensing Technology (PST), is the latest technology for the customized treatment and prevention of stages I-IV pressure sores. The Adapt Pro Elite™ Patient Sensing Technology (PST) measures the patient and automatically adjusts to create the patient's optimal therapeutic surface. Low Air Loss is achieved through a unique Ventilated Low Air Loss Cover that enhances therapy and helps to control micro-climate.



### SPECIFICATIONS:

Weight Capacity:	400 - 560 lbs.
Mattress Dimensions:	80" x 36"/42" x 8"
Power Unit Dimensions:	16.5" x 9" x 5"

## Apollo 3-port

The Apollo 3 Port alternating pressure with low air loss utilizes 18 independent 8-inch deep air cells to provide pressure redistribution for the prevention and treatment of Stages I-IV pressure ulcers. Ventilated low air loss bladders include 40 air holes in the sacral and torso areas to help minimize skin maceration by reducing excess moisture under the user.



### SPECIFICATIONS:

Weight Capacity: 3	50 lbs.
Mattress Dimensions:	80" x 35" x 8"
Power Unit Dimensions:	12.5" x 9" x 4.5"

## Power-Turn Elite®

True Low Air Loss and Lateral Rotation, in a portable system. The Lateral Rotation has either a Small Turn (25 degrees) or a Big Turn (40 degrees). It is designed to replace a standard mattress. Consists of a power unit, a mattress, and a cover. The mattress utilizes 18 independent 9" deep air cells to provide proper pressure redistribution for the prevention and treatment of Stages I-IV pressure ulcers. Lateral Rotation Therapy reduces the risk of pulmonary complications for patients who are immobile.



### SPECIFICATIONS:

Weight Capacity:	500 - 650 lbs.
Mattress Dimensions:	80" x 36" x 9"
Power Unit Dimensions:	17" x 10.5" x 7"
Standard Side Bolsters:	10" patented air side rail

## 84" Adapt Pro Elite™

The Adapt Pro Elite™, Alternating Pressure Enhanced Low Air Loss Mattress with Patient Sensing Technology (PST), is the latest technology for the customized treatment and prevention of stages I-IV pressure sores. The Adapt Pro Elite™ Patient Sensing Technology (PST) measures the patient and automatically adjusts to create the patient's optimal therapeutic surface. Low Air Loss is achieved through a unique Ventilated Low Air Loss Cover that enhances therapy and helps to control micro-climate.



### SPECIFICATIONS:

Weight Capacity:	400 - 560 lbs.
Mattress Dimensions:	84" x 36"/42" x 8"
Power Unit Dimensions:	16.5" x 9" x 5"

## Salute RDX

The Salute RDX system is a microcontroller-based therapeutic pressure relief system designed for patients up to 500 pounds. The system provides pressure relief by sequentially deflating and inflating alternate air cells on a timed interval.



### SPECIFICATIONS:

Weight Capacity:	500 lbs.
Mattress Dimensions:	80" x 36" x 8"
Power Unit Dimensions:	13.5" x 8.3" x 5.4"

## Enhance DX

The Enhance DX system is a microcontroller-based therapeutic pressure relief system designed for patients up to 500 pounds. The system provides pressure relief by sequentially deflating and inflating alternate air cells on a timed interval.



### SPECIFICATIONS:

Weight Capacity:	500 lbs.
Mattress Dimensions:	80" x 36" x 8"
Power Unit Dimensions:	8.3" x 4.5" x 5.5"

## Thera-Turn Millennium

The Sentech Thera-Turn mattress system is a microcontroller-based lateral rotation pressure relief system designed for patients up to 300 pounds for the Thera Turn. The system provides Low Air Loss through the flow of air delivered through the mattress cover to aid in maintaining a temperature environment that enhances wound pressure therapy. The system also provides Lateral Turning, which assists individuals with pulmonary disorders, as well as repositioning, and pressure relief. The controller provides a real time display.



### SPECIFICATIONS:

Weight Capacity:	300 lbs.
Width:	36"
Length:	80"
Controller Height:	12.2"
Controller Width:	14.5"
Controller Depth:	6.0"
Controller Weight:	17-19 lbs.
Electrical Cord Length:	13", 16-18 AWG Hospital Grade

## Broda Midline Tilt in Space Chair

The Broda Midline Tilt Recliner has many different options for positional needs. The Broda Midline Tilt Recliner features an adjustable seat height for taller or shorter users. The Broda Midline Recliner has independent gas cylinders to independently control the recline AND the tilt of the chair. The seat and tilt of the chair reduces sliding and slumping. The Elevating Leg Rests elevate with the recline of the chair. The Elevating Leg Rests can also independently adjust when the chair is NOT in a reclined position. The Broda Midline Tilt Recliner has adjustable armrests.

**BRODA**



### SPECIFICATIONS:

Weight Capacity:	350 lbs.
Seat Width:	20"
Seat Depth:	17"
Max Tilt:	38 Degrees
Max Recline:	90 Degrees
Trendelenberg Capable	
Huntingdon's Padding Package:	Optional

## Broda Traversa Chair

The Broda Traversa Chair has many different options for positional needs. The Broda Traversa Chair has independent activation handles to independently control the tilt of the chair AND the recline feature of the chair. The tilt in space and recline features help with the seating and positioning of the user. The Broda Traversa Chair has elevating flip down footrests. The Broda Traversa Chair has adjustable armrests. The Broda Traversa Chair is WC-19 compliant, enabling it to be used as a safe, vehicle transport chair for the user. The Broda Traversa Chair has a foot pedal that adjusts the seat height for easier lateral transfer.

**BRODA**



### SPECIFICATIONS:

Weight Capacity:	450 lbs.
Seat Width:	20"
Seat Depth:	18.5"
Max Tilt:	20 degrees
Max Recline:	90 degrees
Trendelenberg Capable	
WC-19 Travel Package:	Standard

## Broda Synthesis Chair

The Broda Synthesis Chair has many different options for positional needs. The Broda Synthesis Chair has independent activation handles to independently control the tilt of the chair AND the recline feature of the chair. The tilt in space and recline features help with the seating and positioning of the user. The Broda Synthesis Chair has optional elevating flip down footrests. The Broda Synthesis Chair has adjustable armrests. The Broda Synthesis Chair has an optional WC-19 Transport Package that enables the chair to be used as a safe, vehicle transport chair for the user.

**BRODA**



### SPECIFICATIONS:

Weight Capacity:	350 lbs.
Seat Width:	20"
Seat Depth:	17"
Max Tilt:	40 degrees
Max Recline:	90 degrees
Trendelenberg Capable	
WC-19 Travel Package:	Optional



## Broda Encore Rocking Chair

The Broda Encore Rocker has many different options for positional needs. The Broda Encore Rocker features an adjustable seat height for taller or shorter users. The Broda Encore Rocker has independent activation handles to independently control the tilt of the chair AND the rocking feature of the chair. The rocking feature helps to calm agitated users. The tilt in space feature helps with seating and positioning of the user. The Broda Encore Rocker has optional swing away footrests or elevating swing away leg rests. The Broda Encore Rocker has adjustable armrests.

**BRODA**



### SPECIFICATIONS:

Weight Capacity:	250 lbs.
Seat Width:	20"
Seat Depth:	17"
Max Tilt:	40 degrees
Rocking Chair Option:	

## FlexTilt WC19 Transport Chair

The Flex-Tilt WC19 transport chair provides users a cost effective alternative to tilt-in-space, vehicle safe transport chairs. The Flex-Tilt chair comes in many different chair dimensions, as well as has many adjustable points to customize the chair to the user.

**MEDMIZER**



### SPECIFICATIONS:

Weight Capacity:	350 lbs.
Frame Gauge Steel:	11g - 16g
Degree of Tilt:	25 Degrees
Seat Width Options:	16", 20", 24"
Seat Depth Options:	16.5", 21.5"
Adjustable Seat Height:	12.5" - 17.5"
Back Seat Height:	32"
Seat Height Adjustability:	19.5" - 21.5"
Manufacturer's Warranty:	3 year frame & 1 year components

## Dyn-Ergo Scoot Chair

The Dyn-Ergo Scoot Chair features an adjustable seat height and seat depth that enables the user to maneuver the chair with their feet. An adjustable tilt positioning of the chair reduces sliding and slumping for the user. The contoured cushions evenly distribute weight for better user comfort. A wide variety of accessories available, including swing away foot rests, structural lateral supports, elevating leg rests, and other various options.

**Optima**  
PRODUCTS INC.



### SPECIFICATIONS:

Weight Capacity:	250 lbs. - 400 lbs.
Max. Length:	58"
Length - Upright:	31"
Max. Width:	25.5" - 33"
Min. Width:	23.5" - 31"
Seat Width:	16" - 23.5"
Seat Height:	13.5" - 18.5"
Seat-to-backrest Angle:	95 - 115 Degrees

## Evolution Mobility Chair

The Evolution chair has many different options for positional needs. The Evolution Mobility Chair features an adjustable seat height and adjustable seat depth that enables users to maneuver and propel with one's arms, feet or both. The seat and tilt of the chair reduces sliding and slumping while contoured cushions evenly distribute weight for better patient comfort and pressure management during long periods of sitting. A wide variety of accessories available, including swing away foot rests, structural lateral supports, elevating leg rests, and other various options.



### SPECIFICATIONS:

Weight Capacity:	250 lbs. - 400 lbs.
Max. Width:	57"
Min. Width:	32"
Overall Width w/Options:	24.5" - 32"
Seat width:	16" - 23.5"
Max. Height:	54.5"
Max. Tilt:	23 Degrees
Seat-to-Backrest Angle:	95 - 115 Degrees
Chair Weight w/o Accessories:	70 lbs. - 89 lbs.

## Posturo-Pedic 1000

The Optima Posturo Pedic tilt-in-space chair features a tool-less adjustable seat depth. The Optima Posturo Pedic comes standard with an adjustable elevating leg rest with adjustable foot support. The Optima Posturo Pedic chair comes standard with armrests that are height adjustable for a perfect fit. The Optima Posturo Pedic has an adjustable reclining back that accepts a variety of trunk and head positioning options. The Optima Posturo Pedic also has "drop-arm" armrests and a fold down backrest that facilitate safer lateral transfers and protect the caregiver and resident from costly injuries.



### SPECIFICATIONS:

Seat Width Dimension:	17" / 20"
Seat Height:	20"
Backrest Reclining Angle:	45 Degrees
Seat Tilting Angle:	30 Degrees
Overall Chair Width:	22.5"
Overall Chair Height:	48.75"
Mobility Package:	Option Available

## Comp-Position Positioning Chair

The Comp-Position chair is designed to be one of the most highly adjustable tilt in space chairs in the marketplace today. The Comp-Position is capable of a 45 degree tilt-in-space angle, allowing a high degree of tilt for users that require it. Other standard features include: Adjustable seat height, width, and depth; Adjustable tilt and recline angle; Adjustable armrest, leg rest, and headrest height.



### SPECIFICATIONS:

Weight Capacity:	250 lbs.
Overall Chair Width:	25.75"
Overall Chair Length (upright w/legrest retracted):	34.5"
Overall Chair Length (reclined & tilted w/legrest extended):	65"
Overall Chair Height (upright w/legrest retracted):	53.25"
Seat to Floor Height:	19" - 21"
Maximum Tilt:	45 Degrees
Backrest Recline Angle Range:	90 - 115 Degrees
Total Weight (without accessories):	104 lbs.

## Rock-King X3000

The Rock-King X3000 is a wheelchair that is designed to either be used like a regular chair, a tilt in space wheelchair, or a rocking chair. The Rock-King X3000 has many different options for positional needs; Upright Position, Rocking Mode, and Tilt-in-Space Position.

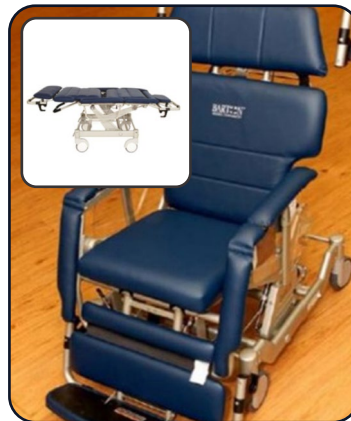


### SPECIFICATIONS:

Weight Capacity :	350 lbs.
Seat Height from Floor: (Adjustable in 1-inch increments)	15" - 21"
Overall Width:	28.5"
Chair Weight: (no accessories)	63 lbs.
Overall Length: (without footrests)	32"
Seat Width:	20"
Seat Depth:	16"
Height of Backrest from Seat:	32"
Limited Warranty:	Frame - 7 years, Sling Seat and Cushions - 1 year

## Convertible I-Series I-400

The Barton Convertible I-Series chair and the Patient Transfer System (PTS) are designed to enable a single caregiver to transfer and frequently reposition a bariatric user with limited or no ability to ambulate. The Barton I-400 and Barton I-700 chairs can function as: A stretcher, an upright mobile chair, or a tilt-in-space chair. The Barton Convertible chairs allow for easy lateral transfers with the PTS while the chair is in the stretcher position. The Barton Chair has heavy duty central locking/steering casters to create a safer and easier to transfer wheelchair.

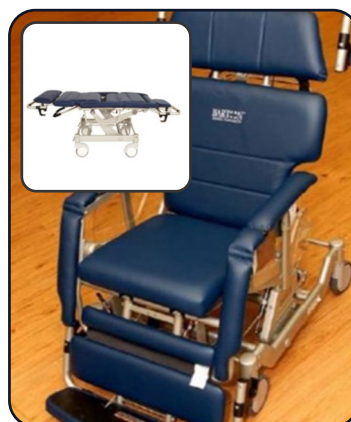


### SPECIFICATIONS:

The I-400 Convertible® Chair (Net weight: 191 lbs.)	
Weight Capacity:	400 lbs.
Overall Width:	29.5"
Seat Width/Depth:	21" / 19"

## Convertible I-Series I-700

The Barton Convertible I-Series chair and the Patient Transfer System (PTS) are designed to enable a single caregiver to transfer and frequently reposition a bariatric user with limited or no ability to ambulate. The Barton I-400 and Barton I-700 chairs can function as: A stretcher, an upright mobile chair, or a tilt-in-space chair. The Barton Convertible chairs allow for easy lateral transfers with the PTS while the chair is in the stretcher position. The Barton Chair has heavy duty central locking/steering casters to create a safer and easier to transfer wheelchair.



### SPECIFICATIONS:

The I-700 Convertible® Chair (Net weight: 206 lbs.)	
Weight Capacity:	700 lbs.
Overall Width:	35"
Seat Width/Depth:	25" / 19"

## Varying High-Back Reclining Wheelchair Width Options

We provide a variety of high-back reclining wheelchairs from differing manufacturers. The wheelchairs come in varying sizes and weight capacities to fit the needs of the user.



*drive* for the road ahead

### SPECIFICATIONS:

Weight Capacity:	300 lbs. - 450 lbs.
Seat Width:	16" / 18" / 20" / 22"
Floor to Seat Height:	21"
Back Height:	21" / 22" / 31" / 33"
Seat Depth:	Varies by type of chair
Seat Height:	Varies by type of chair

## Varying Standard Wheelchair Width Options

We provide a variety of wheelchairs from differing manufacturers. The wheelchairs come in varying sizes and weight capacities to fit the needs of the user.



**GEMCO**  
MEDICAL

**GENDRON**  
by graham-field

*drive* for the road ahead

**INVACARE**  
Yes, you can.

### SPECIFICATIONS:

Weight Capacity:	250 lbs. - 700 lbs.
Seat Width:	18" / 20" / 22" / 24" / 26" / 28" / 30" / 32" / 34"
Seat Depth:	Varies by type of chair
Seat Height:	Varies by type of chair

## Drive 600 Lift

The Drive Medical 600 Lift is designed for individuals who have trouble standing and navigating independently. These lifts aid the patient and caregiver during patient transfer by safely and securely raising and lowering patients from any stationary position.



### SPECIFICATIONS:

Weight Capacity:	600 lbs.
Boom Height:	32" - 75.5"
Base Width:	45.75" Open   25" Closed
Base Height:	4.5"
Base Clearance:	2"
Product Weight:	132 lbs.
Casters:	3" Front   4" Rear
Drive Sling (Sm., Med., Lg., XL -Sale Only):	Purchase Required

## Sit To Stand Assist Lift

The Drive Sit To Stand Assist Lift is designed for individuals who retain some upper body control, but have trouble standing independently. The lift aids the patient and caregiver during patient transfer because it mimics a natural standing motion for a patient and eliminates manual lifting for the caregiver. The Drive Stand Assist Lift includes the following features: Non-Skid Footboard, Height Adjustable Padded Knee Support, Large Caster Wheels and Rechargeable Battery Pack.



### SPECIFICATIONS:

Weight Capacity:	400 lbs.
Product Weight:	113 lbs.
Product Base Width:	40" Open   24.5" Closed
Product height:	26-81"
Base Clearance:	4.5"
Casters:	3" Front   4" Rear

## Med Rizer 600 lb Lift

The Med Rizer 600 Lift is designed for individuals who have trouble standing and navigating independently. These lifts aid the patient and caregiver during patient transfer by safely and securely raising and lowering patients from any stationary position. The Med Rizer 600 Lift includes the following features: Jumbo Actuator Control Box, Base Legs, Cradle and Rechargeable Battery Pack.



### SPECIFICATIONS:

Weight Capacity:	600 lbs
Boom Height:	19.625"-82.25"
Base Width:	26"-44.5"
Product Weight:	124 lbs
Casters:	4" front and 4" rear casters.
Sling:	Purchase Required
Scale available	



## Med Rizer 1000 lb Lift

The Med Rizer 1000 Lift is designed for individuals who have trouble standing and navigating independently. These lifts aid the patient and caregiver during patient transfer by safely and securely raising and lowering patients from any stationary position. The Med Rizer 1000 Lift includes the following features: Redundant Controls on Control Box, Base Legs, Spreader Bar 4 Point Cradle and Rechargeable Battery Pack.

**MED**MIZER®



### SPECIFICATIONS:

Weight Capacity:	1000 lbs
Boom Height:	55"-85"
Base Width:	30"-59"
Product Weight:	300 lbs
Casters:	4" front and 4" rear wheels
Sling:	Purchase Required
Scale available	

## Hoyer® HPL700

The Hoyer 700 Lift is designed for individuals who have trouble standing and navigating independently. This lift aids the patient and caregiver during patient transfer by safely and securely raising and lowering patients from any stationary position.

**Joerns**  
HEALTHCARE



### SPECIFICATIONS:

Weight Capacity:	700 lbs.
Boom Height:	46.5" - 57.75"
Base Width:	46.25" Open -27.5" Closed
Base Height:	4.5"
Product Weight:	150 lbs.
Casters:	3" Front   4" Rear
Lift Range of Boom:	23" - 63"
Scale:	Available Upon Request

## Hoyer® Pro 300 Stand Aid

The Hoyer Pro Stand 300 is designed for individuals who retain some upper body control, but have trouble standing independently. The lift aids the patient and caregiver during patient transfer because it mimics a natural standing motion for a patient and eliminates manual lifting for the caregiver. The Hoyer Pro Stand 300 includes the following features: Anti-Slip Contoured Footboard, Height Adjustable Padded Knee Support, Large Caster Wheels and Rechargeable Battery Pack.

**Joerns**  
HEALTHCARE



### SPECIFICATIONS:

Weight Capacity:	300 lbs.
Product Weight:	100 lbs.
Product Width:	24-48"
Product Length:	46-48"
Overall chair width:	28.5"
Base Clearance:	4"
Range of Boom:	44-64"
Sling/noodle:	Purchase Required

## Titan-X® Mobile Lift

The Tollos Titan-X Lift is designed for individuals who have trouble standing and navigating independently. These lifts aid the patient and caregiver during patient transfer by safely and securely raising and lowering patients from any stationary position.

**tollos**  
Lightening the Load of Care



### SPECIFICATIONS:

Weight Capacity:	1000 lbs.
Boom Height:	22" - 65.5"
Base Width:	34.5" - 49"
Base Clearance:	4.5"
Product Weight:	300 lbs.
Casters:	3" Front   5" Rear
Slings:	Purchase Required

## Maxi Care Bariatric Lift

The Gendron Maxi Care Lift is designed for individuals who have trouble standing and navigating independently. These lifts aid the patient and caregiver during patient transfer by safely and securely raising and lowering patients from any stationary position.

**GENDRON**  
by graham-field



### SPECIFICATIONS:

Weight Capacity:	700 lbs.
Boom Height:	32.75" - 73.75"
Base Width:	61" - 63.5"
Base Height:	4.75"
Base Clearance:	2"
Casters:	3" Front   5" Rear
Scale:	Optional
Gendron Hammock Sling:	Purchase Required

## Genadyne XLR8

The Genadyne XLR8 wound vac provides an easy to use and intuitive pump to assist patients that have a need of negative pressure. The Genadyne XLR8 pump provides: A Clear and Visible Display. Simple, Lockable Controls. Easy and intuitive programming and maintenance. Supports Multiple Language. Whisper Quiet Operation. The XLR8 provides the caregiver, in real time, the total treatment time, display of the target pressure, as well as the quality of the suction. The XLR8 allows the user to select the type of therapy specified by the physician; continuous or variable/intermittent.

GENADYNE



### SPECIFICATIONS:

Lithium Battery Life:	12 hours, 3 hours to fully charged
Electrical Power:	19 VDC, 1.57A 30W (Min), 20 VDC (Max)
Height:	2.1"
Width:	3.9"
Length:	5.9"
Weight:	1.3 lbs. - 1.5 lbs, depending on canister attached
Suction Capacity:	4.0 Liters Per Minute

## Accessories for Negative Pressure Wound Therapy

Accessories for Negative Pressure Wound Therapy, including Thick Kits, Thin Kits, Canisters, PVA Foam Kits, Dressing Kits, plus additional items.



### SPECIFICATIONS:

Thick Kits:	Small, Medium and Large
Thin Kits:	Small, Medium and Large
Canisters:	400 cc, 600 cc and 800 cc
White PVA Foam Kits:	Small and Medium
Dressing Kits:	Fridge and Spiro

### Powered Recliner w/ Stand & Lift Assist



The IOA Motorized Recliner with Patient Lift Assist is a motorized recliner chair. Like all recliners, the back of the chair can open up, to allow the user to lay down in any position, including completely flat, and comfortably relax within the chair. The chair also has a vertical lift feature that can elevate the chair to make it easier to step out of the chair in an upright position.



#### SPECIFICATIONS:

Weight Capacity:	350 lbs.
Seat depth:	23"
Seat dimensions:	24" W x 16" H
Chair dimensions:	31" W x 42" D x 46" H
Warranty:	Complete coverage by all-inclusive 12 year warranty.

### PulSTAR® Logix® DVT

The Pulstar Logix Pump is designed to allow for single or dual limb operation. It has kink-resistant tubing with customizable pressure for effective and personalized therapy. Lightweight design, at 5 lbs. Color coded tubing for easy limb identification. Optimum therapeutic pressure customizes pressure to each limb. Safety connectors will not connect to other hospital equipment. LCD screen easily visible from multiple angles. Pause feature allows therapy to be suspended and resumed on demand.



#### SPECIFICATIONS:

Product Weight:	5 lbs.
Tubing Length:	8"
<b>Calf Circumference of the Garment Sizes</b>	
Regular:	11" - 19"
Oversize:	19.25" - 26.5"
<b>Foot Wrap Circumference</b>	
Regular:	7.5" - 12"
Large:	12.5" - 16"

### Chair-Air™ Model 9700CAF



The Blue Chip Chair-Air alternating air wheelchair cushion has four individual bladders that alternate to provide the patient a superior pressure redistribution seating surface while the unique molded design, with slight abductor pommel, stabilizes the hips and keeps the patient in proper mid-line alignment. The zippered non-skid, stretch-knit cover is anti-microbial and fire-retardant. The Chair-Air is utilized in the prevention and treatment of pressure ulcers. Chair-Air meets California Technical Bulletin #117 for fire retardancy.



#### SPECIFICATIONS:

Weight Capacity:	250 lbs.
Controller Dimensions:	14.5" L x 5" W x 12.5" H
Controller Weight:	1.6 lbs
Cushion:	18"L x 16"W x 3"H
Weight:	3 lbs.
Cycle Time:	10, 15 or 20 Min

## Sedens 500

The Apex Chair Cushion is a portable, microprocessor controlled therapeutic pressure relief seat cushion. The alternating pressure provides pressure relief by sequentially deflating and inflating alternate air cells on a timed interval. Through the alternating air cells, the system alleviates the areas of constant pressure and enhances circulation. The amount of pressure to support the patient can be set manually for custom configurations.



### SPECIFICATIONS:

Weight Capacity:	260 lbs.
Controller Dimensions:	25" H x 12.5" W x 5.7" D cm
Controller Weight:	2.2 lbs
Cushion:	16" L x 16 W x 2.5" H, 17" L x 17" W, 18" L x 18" W
Cycle Time:	10 / 15 / 20 Min Selectable
Battery Charge Time:	4.5 Hours
Battery Operating Time:	Approximately 12 Hours

## Optiflex® 3 Knee CPM

The Chattanooga OptiFlex3 Knee CPM (Continuous Passive Motion) is designed to provide rehabilitative therapy to an injured or post-operative knee by moving the knee joint through a range of motion for extended periods of time. This type of therapy increases the range of motion and reduces post-surgery recovery time.



### SPECIFICATIONS:

Weight Capacity:	350 lbs.
Weight:	27 lbs.
Length:	37"
Electrical Class:	Class I
Electrical Type:	Type B
Mode of Operation:	Continuous
Flexion:	120 Degrees Maximum
Extension:	-10 Degrees Maximum Hyper Extension
Note:	Soft Goods are For Sale Only

## OptiFlex®-K1

The Chattanooga OptiFlex K1 is designed to provide rehabilitative therapy to an injured or post-operative knee by moving the knee joint through a range of motion for extended periods of time. This type of therapy increases the range of motion and reduces post-surgery recovery time.



### SPECIFICATIONS:

Weight:	23 lbs
Length:	38"
Other:	Wide low-profile, closed-base frame for stability
Drive:	Single screw
Footplate:	Reversible for shorter legs
ROM:	-10 - 120
Accommodates patients:	4' - 6.6'
Warranty:	Two-year
Note:	Soft Goods are For Sale Only



### Thera-Glide® Safety Glider



The Optima Thera Glide provides the soothing sensation of gliding, similar to other gliders in the market, but also blends safety, comfort, and modernity into the product. The Optima Thera Glide's patented automatic immobilization mechanism keeps the chair in a fixed position when the user is getting up. This same mechanism also allows gliding when the user is fully seated, with their back resting up against the back of the chair. Infinite locking positions. Customizable Fabric Options. Upholstered Side Panels. Customizable Wood Stain Finish. Cherry, Natural, Mahogany, Walnut, and Ebony.



#### SPECIFICATIONS:

Weight Capacity:	350 lbs. - 450 lbs.
Total height:	42.5" to 47"
Seat-to-floor height:	Adjustable from 16" to 19"
Total width:	22" - 29.5"
Seat width:	16.5" - 23.5"
Seat-to-armrest height:	7" - 8"
Seat depth:	17" - 18"
Backrest height:	28" - 31"
Weight:	58 lbs. - 75 lbs.

### Foam Mattresses

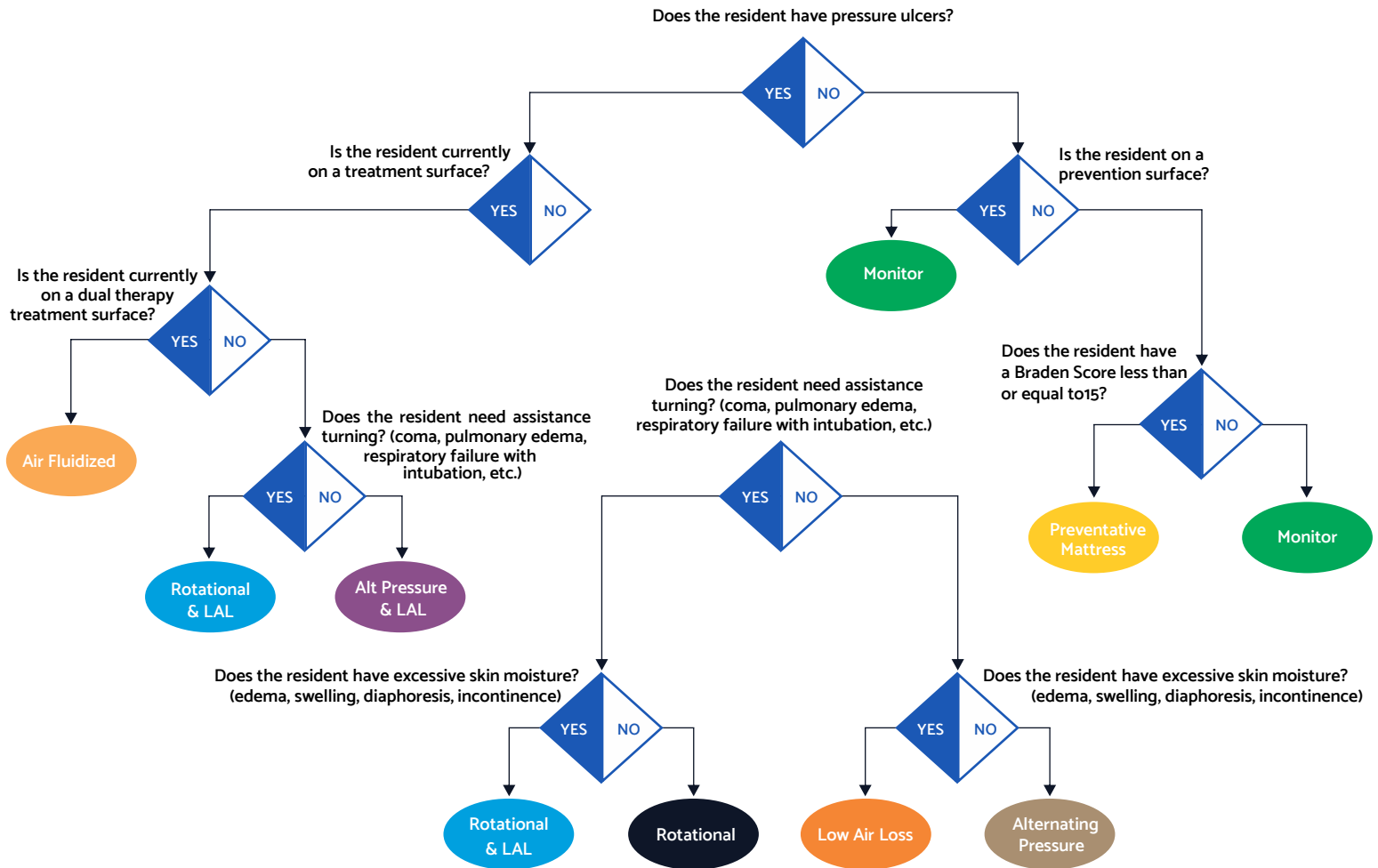
36 Inch, 42 Inch, 48 Inch and 54 Inch Foam Mattresses



#### SPECIFICATIONS:

Sizes:	36", 42", 48" and 54"
--------	-----------------------

## CHE SUPPORT SURFACE ADVISOR (VERSION 1.2)



### DISCLAIMER

This prior to consultation with the patient's physician and wound care team **tool is intended to be used as a guide** regarding a patient's condition. This tool in no way supercedes the physician directives, treatment guidelines, or established facility guidelines. Always consult a physician prior to selection of a support surface.

PHONE: 866.603.6598

FAX: 724.548.5454

WWW.CHEWEB.NET

CONTINENTAL HEALTH EQUIPMENT INC.

529 BUTLER ROAD

KITTANNING, PA 16201



CONTINENTAL  
HEALTH  
EQUIPMENT